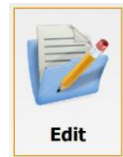




Magnet – Adding Points In Manually



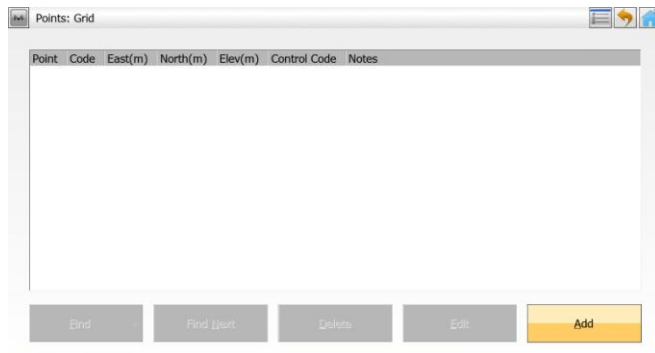
When we have been given co-ordinates, whether to set out, or to use as control points, generally the easiest way to enter these, is by hand. Here is a quick guide on how we can do so!



Firstly, from the home screen we need to click

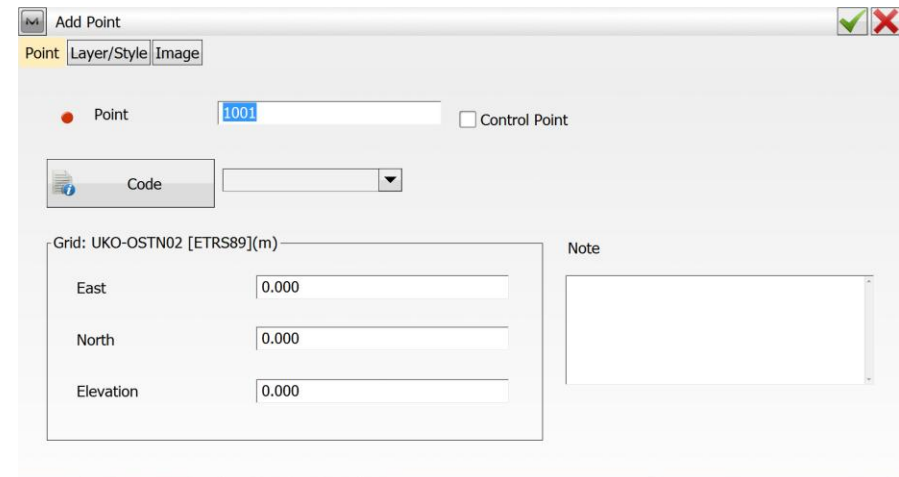


Then click **Points** This will then take us to the Points screen.



Here we can Add, Edit or Delete points from our point list.

By clicking the 'Add' button in the bottom right hand corner, we can then start adding in our co-ordinate data.

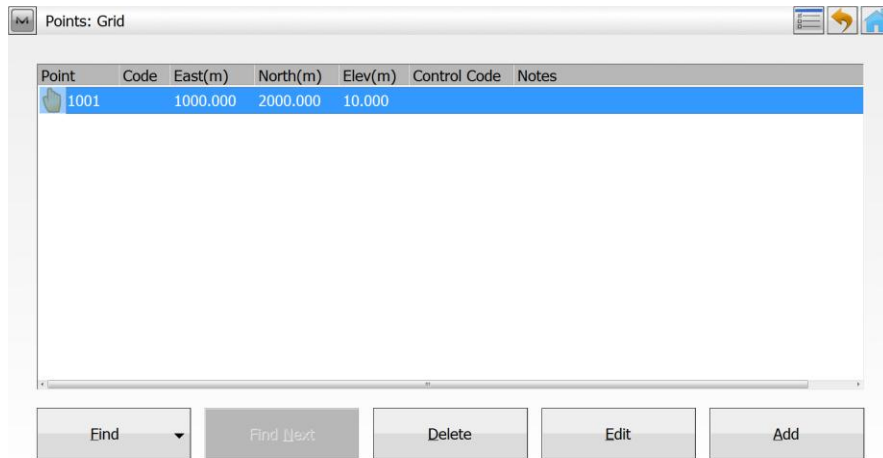


We then just simply edit the default values by clicking on the default values (1001 for point, or 0.000 for E, N, El), this will then throw up a keyboard for you to enter the values needed. Once you are happy with the data, click the green tick in the top right, and that will save that point



Magnet - Adding Points In Manually

We should then see the data inputted, on the points screen



As you can see, we now have the options to Find, Delete or Edit any of our co-ordinates