

## **vCam-6 User Handbook** (English Edition)

Version 1.4

P/N:4.04.000087





## General Safety & Care Information

### ***Health and Safety***

This equipment is primarily used for the inspection of sewer pipes by professionals operating in the sewer and plumbing industry. Maintained by professionals familiar with the health risks of maintaining equipment that has been in a sewer.

Such professionals will be protected by their own company's recommendations and work practices. If for any reason they are not, or are not familiar with such practices, please check our website or email SalesUSA@vxmt.com for a copy of the Health and Safety Document used by Vivax-Metrotech for employees involved in the demonstration, maintenance, and handling of sewer camera systems.

- Keep all electrical connections dry and off the ground.
- Be aware of your surroundings at all times. Cone off open utility holes and follow traffic control regulations.
- Use personal protection such as eyewear, rubber gloves, and non-skid safety shoes.
- **Do not** use the control module as a handle to move the reel. Remove the control module or use the steel handle that is part of the reel's frame.

### ***Worksite Safety***

- Use your company's or other applicable safety code and rules when using this equipment.
- **Do not** use this equipment in explosive areas – such as in the presence of flammable liquids, gases, and heavy dust.

### ***Equipment Safety***

- **Do not** open the enclosures (housings) of the control module or camera heads.
- Opening the housings or the control module or camera head will void any warranty.
- Use only the leads supplied with the control module for AC or DC operation and charging.

### ***Batteries and Environmental Safety***

Vivax-Metrotech products use four types of batteries:

- Alkaline batteries
- Ni-MH (Nickel Metal Hydride) – rechargeable
- Lithium-Ion batteries – rechargeable
- Lithium metal batteries – (small non-rechargeable button cells for “clock” applications)

#### ***Alkaline Batteries (Sondes, Light Kits or Locators)***

- When replacing the alkaline batteries – use only the size and type specified – do not mix battery types (rechargeable and alkaline).
- Do not mix partially discharged and fully charged cells in the same battery pack – do not mix old with new.
- Never attempt to charge alkaline batteries.



# Table of Contents

- 1. Service & Support ..... 1
  - 1.1 Model and Serial Number Location ..... 1
    - 1.1.1 Control Module..... 1
    - 1.1.2 Reels..... 1
    - 1.1.3 Camera Heads..... 1
  - 1.2 Firmware Revision Location ..... 2
  - 1.3 Request for Service ..... 2
  - 1.4 Distributors and Service Centers..... 3
- 2. Introduction ..... 4
  - 2.1 The vCam-6 Inspection Camera System..... 4
  - 2.2 Standard Equipment - Control Module ..... 4
  - 2.3 vCam-6 Control Module Overview ..... 5
  - 2.4 vCam Series Cable Reels Overview ..... 7
    - 2.4.1 Standard Equipment - Reels..... 7
    - 2.4.2 Type-CP Standard Reel ..... 7
    - 2.4.3 MX Mini Reel..... 9
- 3. Initial Control Module Setup..... 10
  - 3.1 Initial Control Module Setup ..... 10
    - 3.1.1 Installing the Fuse..... 10
    - 3.1.2 Charging the Internal Battery ..... 10
    - 3.1.3 The Interconnect Cable..... 11
    - 3.1.4 About Control Module Settings ..... 11
  - 3.2 Navigating through the Setup Menu ..... 11
    - 3.2.1 Keyboard Keys used in the Setup Menu..... 12
    - 3.2.2 Setting the Control Module Language ..... 12
    - 3.2.3 Setting the Default Storage ..... 13
    - 3.2.4 Setting the Distance Counter ..... 14
    - 3.2.5 Setting the Date, Time and Format ..... 14
    - 3.2.6 Setting the Sonde Frequency ..... 15
    - 3.2.7 Wi-Fi Administration ..... 16
    - 3.2.8 Setting the Reel Type..... 16
    - 3.2.9 Restore the Factory Default Settings ..... 17
    - 3.2.10 Update the Control Module Firmware ..... 17
    - 3.2.11 Update the Control Module Start Screen ..... 20
    - 3.2.12 The About Screen ..... 21
    - 3.2.13 Video Out..... 21
- 4. Video Recording and Picture Image Capture ..... 22
  - 4.1 Overview ..... 22
  - 4.2 Main File Menu ..... 22
    - 4.2.1 File List Sub-Menu ..... 23
    - 4.2.2 File Option Sub-Menu ..... 24
    - 4.2.3 Media Select Sub-Menu..... 24
  - 4.3 Video Recording and Playback Controls ..... 25
    - 4.3.1 Making a Video Recording..... 26
    - 4.3.2 JPEG Image Picture Capture..... 26
  - 4.4 Play Videos and View Pictures in the Control Module..... 27
    - 4.4.1 View Picture Image Files: ..... 27
    - 4.4.2 Renaming a Video or JPEG Image File ..... 27



4.4.3	Copy, Move or Delete Videos and Pictures.....	28
4.5	File Format of SD Cards and USB Devices .....	29
4.6	Video Format.....	30
4.7	Troubleshooting Video Playback .....	30
4.8	Default Apps and File Associations .....	30
5.	Features Available During Recording .....	32
5.1	Voice Over.....	32
5.2	Volume Control.....	32
5.3	Display and Backlight Settings .....	33
5.4	On-Screen Status Bar .....	33
5.5	On-Screen Display (OSD Info).....	33
5.6	Camera LED Light Control .....	33
5.7	Text Writer .....	34
5.7.1	Introduction to the Text Writer .....	34
5.7.2	Keyboard Function Keys of the Text Writer.....	34
5.7.3	Text Writer Components.....	36
5.8	JPEG Image Capture .....	36
5.9	Digital Zoom .....	36
6.	Wi-Fi.....	37
6.1	Wi-Fi Connection for Apps.....	37
7.	Cable Reels .....	38
7.1	Cable Reel Overview.....	38
7.1.1	Pushrod Cable .....	38
7.1.2	Using the Cable Reels .....	38
7.1.3	Mounting the Control Module.....	39
7.1.4	Remove the Control Module .....	40
7.1.5	Distance Counter Accuracy.....	41
7.1.6	Deployment of the Pushrod Cable .....	42
8.	Camera Heads and Terminations .....	44
8.1	Parts of the Camera Heads .....	44
8.1.1	Camera Head Options .....	45
8.2	Spring Assembly Parts .....	46
8.2.1	Type-CP Termination Spring Kits .....	46
8.2.2	Spring.....	46
8.2.3	Coiled Cable Assembly .....	47
8.2.4	Lanyard Set.....	48
8.2.5	Termination Parts List .....	48
8.3	Removing the Camera Head – D34 and D46 Series Cameras.....	49
8.4	Removing the Standard Reel's Termination Spring and Coiled Cable .....	50
8.5	Installing the Standard Reel's Coiled Cable and Termination Spring .....	51
8.5.1	Pre-check the Termination Parts.....	51
8.5.2	Pre-checking Steel Lanyards .....	51
8.5.3	Pre-checking the Coiled Cable Assembly .....	51
8.5.4	Pre-checking the Spring.....	51
8.6	Installing the D34 and D46 series Camera Heads onto the Type-CP Standard Reel .....	52
8.6.1	Install the Coiled Cable and Termination Spring .....	52
8.6.2	Pre-checking the Camera Head Before Installing.....	54
8.6.3	Pre-checking for Picture and LED Control.....	54
8.6.4	Pre-checking the Camera Base O-Ring.....	54
8.6.5	Pre-checking the Camera Glass Lens and LED Cover.....	54
8.6.6	Installing the D34 and D46 Series Camera Heads .....	55
8.7	Removing and Installing the D18-MX and D26-MX Camera Heads onto the MX Mini Reel .....	56

8.8	Removing and Installing the MX Spring Assembly.....	57
9.	Camera Skids .....	58
9.1	Camera Skids.....	58
9.1.1	Standard Skid Installation .....	58
9.1.2	Guide Skid Installation .....	59
9.1.3	Removable Rubber Guard Skids .....	60
10.	Locating Sondes and Pushrod .....	61
10.1	Introduction .....	61
10.2	Applying a Locate Signal onto the Pushrod .....	61
10.3	Sonde and Camera Locating .....	62
11.	Troubleshooting .....	63







# 1. Service & Support

## 1.1 Model and Serial Number Location

Always quote your camera system's model number, serial number, and software revision number when requesting product support.

### 1.1.1 Control Module

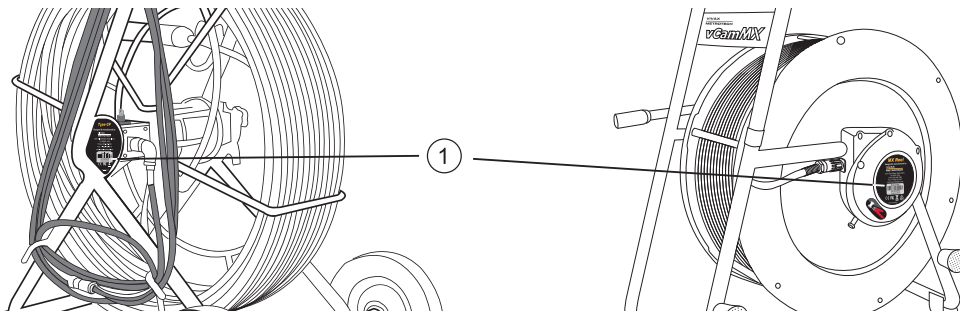
The vCam-6 Control Module model number and serial numbers are found on the back of the unit.



1 Serial Number

### 1.1.2 Reels

The serial numbers for the vCam series reels are on the label at the center of the frame opposite the locking and friction brakes.



Type-CP Reel Standard Reel

MX Mini Reel

1 Serial Number

### 1.1.3 Camera Heads

The camera head models are a combination of the outside diameter of the camera head (less skid) and the type of reel termination it fits on.

D18-MX is 18mm / 0.76" in diameter and used on the MX Mini Reel.

D26-MX is 26mm / 1" in diameter and used on the MX Mini Reel.

D34-HD and D34-C are 34mm / 1.3" in diameter and used on the Type-CP reel.

D46-HD and D46-CP are 46mm / 1.5" in diameter and used on the Type-CP reel.

Remove the standard skid to view the serial number of the camera head.

## 1 Service & Support



The camera's serial is etched across the length of the camera or in the recessed area of the camera housing.

1	Serial Number
---	---------------

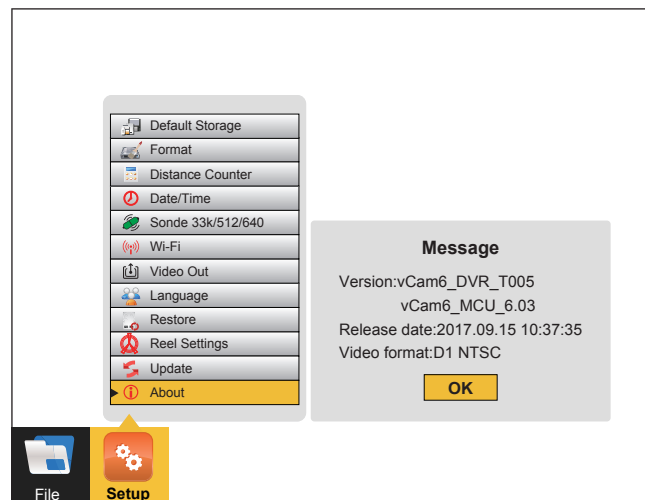
### 1.2 Firmware Revision Location

The "About" screen found in the setup menu shows the control module's firmware (software) version and release date.

There are two types of firmware:

- DVR – for DVR recorder
- MCU – for microprocessor

1. Press the **F10 Menu** key twice on the control module keyboard to bring up the **Setup** menu.
2. Use the **down ↓ arrow** key to scroll down to the **About** selection.
3. Press **Enter** or use the **right ➡ arrow** key to show the firmware version information.



4. Press the **left ← arrow** key or **ESC** key three times to return to the **Setup** menu.

### 1.3 Request for Service

If any of the system components need servicing, the more concise information provided will result in quicker turnaround time. On our website, you can fill out a "Service Center Request" form, print it, and include it with the unit when shipping. Package the product well and ship it by a traceable method.

## 1.4 Distributors and Service Centers

Worldwide Sales Offices and Service Centers	
World Headquarters, United States of America	Central/South America and the Caribbean
<p><b>Vivax-Metrotech Corporation</b> 3251 Olcott Street, Santa Clara, CA 95054, USA</p> <p>T/Free : 1-800-446-3392 Tel : +1-408-734-1400 Fax : +1-408-734-1415 Website : www.vivax-metrotech.com Email : SalesUSA@vxmt.com</p>	<p><b>Ventas para América Latina</b> 3251 Olcott Street, Santa Clara, CA 95054, USA</p> <p>T/Free : 1-800-446-3392 Tel : +1-408-734-1400 Fax : +1-408-743-5597 Website : www.vivax-metrotech.com Email : LatinSales@vxmt.com</p>
<p><b>Canada</b></p> <p><b>Vivax Canada Inc.</b> 41 Courtland Ave Unit 8, Vaughan, ON L4K 3T3, Canada</p> <p>Tel : +1-289-846-3010 Fax : +1-905-752-0214 Website : www.vivax-metrotech.com Email : SalesCA@vxmt.com</p>	<p><b>France</b></p> <p><b>Vivax-Metrotech SAS</b> Technoparc - 1 allée du Moulin Berger, 69130 Ecully, France</p> <p>Tel : +33(0)4 72 53 03 03 Fax : +33(0)4 72 53 03 13 Website : www.vivax-metrotech.fr Email : SalesFR@vxmt.com</p>
<p><b>Germany</b></p> <p><b>Metrotech Vertriebs GmbH</b> Am steinernen Kreuz 10a, D-96110 Schesslitz</p> <p>Tel : +49 954 277 227 43 Website : www.vivax-metrotech.de Email : SalesEU@vxmt.com</p>	<p><b>United Kingdom</b></p> <p><b>Vivax-Metrotech Ltd.</b> Unit 1, B/C Polden Business Centre, Bristol Road, Bridgwater, Somerset, TA6 4AW, UK</p> <p>Tel : +44(0)1793 822679 Website : www.vivax-metrotech.com Email : SalesUK@vxmt.com</p>
<p><b>China</b></p> <p><b>Vivax-Metrotech (Shanghai) Ltd.</b> 3/F No.90, Lane 1122 Qinzhou Rd.(N), Shanghai, China 200233</p> <p>Tel : +86-21-5109-9980 Fax : +86-21-2281-9562 Website : www.vivax-metrotech.com Email : SalesCN@vxmt.com.cn</p>	
International Distributors and Service Centers	
Australasia	China
<p><b>Vivax-Metrotech AUS</b> Unit 1, 176 South Creek Road, Cromer NSW 2099, Australia</p> <p>Tel : +61-2-9972-9244 Fax : +61-2-9972-9433 Website : www.vivax-metrotech.com.au Email : sales@vxmtaus.com, service@vxmtaus.com</p>	<p><b>Shanghai Vimap Technology Co. Ltd.</b> 9/F, Building 89, Xinhuiyuan, No.1122 Qinzhou North Road, Shanghai, China 200233</p> <p>Tel : 4000-999-811 Website : www.vimap.cn Email : info@vimap.cn</p>

## 2. Introduction

### 2.1 The vCam-6 Inspection Camera System

The vCam-6 Inspection System consists of three major components: vCam-6 Control Module, vCam Series Reels, and Camera Heads.

### 2.2 Standard Equipment - Control Module



The below accessories will come with the vCam-6 Control Module



1	<b>Soft Carry Pouch</b>	To hold all the accessories.
2	<b>Flat Head Screwdriver</b>	For use with standard camera skids.
3	<b>Camera Removal Tool</b>	To remove the camera head and termination spring on the Type-CP reel.
4	<b>CD ROM Disc</b>	With manual and video codec.
5	<b>USB Thumb Drive</b>	For storing transferred videos and pictures.
6	<b>10 Amp, 250 Volt Fuse</b>	Two fuses are supplied, one will need to be installed to allow the internal battery to charge. (And one spare)
7	<b>SD Card</b>	To store transferred videos and pictures.
8	<b>AC Power Cable</b>	To power and charge the unit from a 120/240V AC power source.
9	<b>12V DC Power Cable</b>	To power and charge the unit from a vehicle or 12V DC source.
10	<b>Quick Guide</b>	With brief basic instructions.
11	<b>User Handbook</b>	With full operating instructions.


### 2.3 vCam-6 Control Module Overview

The vCam-6 control module allows for the viewing, recording, and playback of Audio Video Interleave (AVI) format video as well as image capturing of Joint Photographic Experts Group (JPEG) pictures. Audio and text commentary can be added to the videos and text commentary can be added to the captured pictures.

The time stamping of the current time, date, and distance of pushrod deployed can be added to both video and pictures.

The following describes the features and use of the control module:

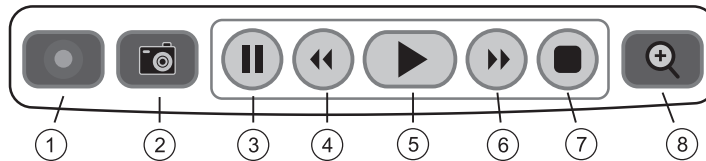
**Control Module Front View**



**Features**

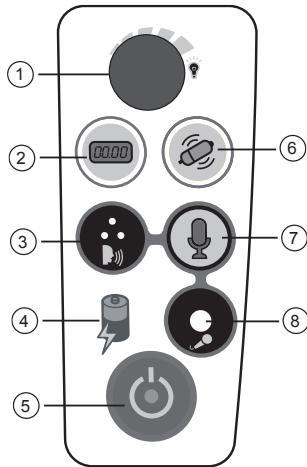
1	Carry handle
2	Recording, snapshot, zoom and video playback controls
3	9.7" daylight viewable HD display (touch screen)
4	Power, distance reset, sonde, internal and external microphones and charging status indicator
5	Lid assembly with keyboard
6	Locking lid latch to keep the lid closed

**Recording, Picture Capture, Playback, and Zoom Controls (top panel)**



1	<b>Start Recording</b>	Use this key to start a recording. A red flashing recording icon will appear on the bottom-left section of the status bar on the LCD screen, and the elapsed recording time will appear bottom center.
2	<b>Picture Capture</b>	Use this key to take a jpeg format picture from live video, from the current recording session or video playback. The picture icon will momentarily appear on the status bar, confirming that a picture was taken.
3	<b>Pause Recording</b>	Use this key to pause the recording video. To resume recording press the pause button again and the pause icon will be replaced by the recording icon.
4	<b>Rewind Video Playback</b>	Use this key to rewind the currently playing video. Press up to three times again to increase the rewind speed.
5	<b>Play Video</b>	Use this key while viewing videos recorded on the control module. Press to resume a paused video.
6	<b>Forward Video Playback</b>	Use this key to forward through the currently playing video. Press up to three times again to increase the forward speed.
7	<b>Stop Recording</b>	Use this key to end a video recording session or to stop a video being played in the control module.
8	<b>Digital Zoom</b>	Use this key to zoom in on live video, recorded video, or jpeg pictures. Press one time to bring up the red zoom box on the screen. Move the zoom box to the area to be magnified and press the enter key. While the zoom box is shown press up to three times more to increase the digital zoom level.

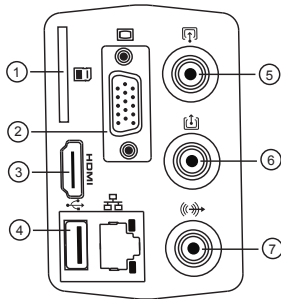
**Front Panel Controls**



**Features**

1	<b>Camera LED Dimmer</b> - to raise, lower, or turn off the camera's LED lighting
2	<b>Distance Counter Reset</b> - to reset the pushrod deployed distance to 0
3	<b>Internal Microphone</b> - to record audio comments over the video recording
4	<b>Battery Charging Indicator</b> will glow red while charging and turn green when fully charged
5	<b>Power On/Off</b> control
6	<b>Sonde On/Off</b> - and frequency selection control
7	<b>Microphone On/Off</b> - glows red when the microphone is active
8	<b>3.5mm Microphone Jack</b> - for use with an external microphone

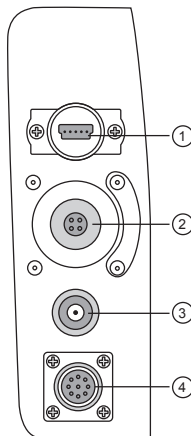
**Media Ports (left side)**



**Features**

1	<b>SD Card Slot</b> for transferring video or pictures to an SD card
2	<b>VGA Port</b> to connect to an external display.
3	<b>HDMI Port</b> to connect to an external display.
4	<b>USB Port</b> for transferring video or pictures to a USB thumb drive.
5	<b>RCA Video In Socket</b> to bring in video from an external source.
6	<b>RCA Video Out Socket</b> to connect to an external monitor or other devices.
7	<b>RCA Audio Out Socket</b> to connect to an external audio device.

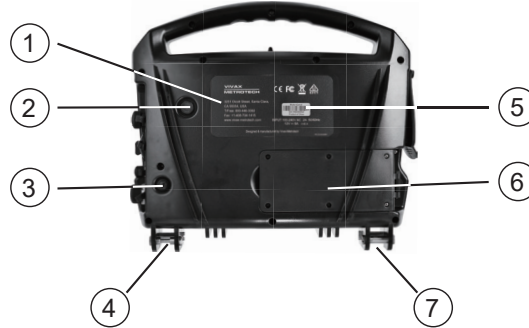
**Interconnect Ports (right side)**



**Features**

1	<b>USB Mini Data Port</b> allows for two-way communications with third party observation software. It is used to export the distance out and the ability to change the distance in LACP software.
2	<b>Camera Test Port</b> to help troubleshoot the D34 and D46 camera heads. A test lead is available to use the D18-MX and D26-MX camera heads.
3	<b>DC Power/Charging Socket</b> provides DC power to power and charges the control module.
4	<b>Reel Interconnect Socket</b> connects the reel to the control module by the interconnect cable.

**Control Module Rear View**



1	The <b>Model and Serial Number Label</b> will show the model, manufacturing date code, and serial number
2	The <b>Vent</b> allows warm air from the microprocessor to escape and vent the housing
3	<b>Fuse Compartment</b> houses the fuse
4	<b>Reel Mounting Locking Pin</b> locks the control module atop the Type-CP Reel
5	The control module's <b>Serial Number</b>
6	<b>Power Supply</b> to monitor battery charging
7	<b>Reel Mounting Pins</b> to attach to the Type-CP Reel

## 2.4 vCam Series Cable Reels Overview

The vCam series cable reels are used to store and control the deployment of the pushrod cable. The vCam series cable reels come in two sizes: a larger Type-CP, standard reel, which is for day-to-day use, and a smaller, more portable Type-MX mini reel, which is used for small diameter applications.

### 2.4.1 Standard Equipment - Reels

Both the Type-CP and MX reels include pushrod with an installed termination spring assembly. The vCam-6 control module can be mounted and locked on top of the larger Type-CP reel, which allows for viewing at a comfortable height.

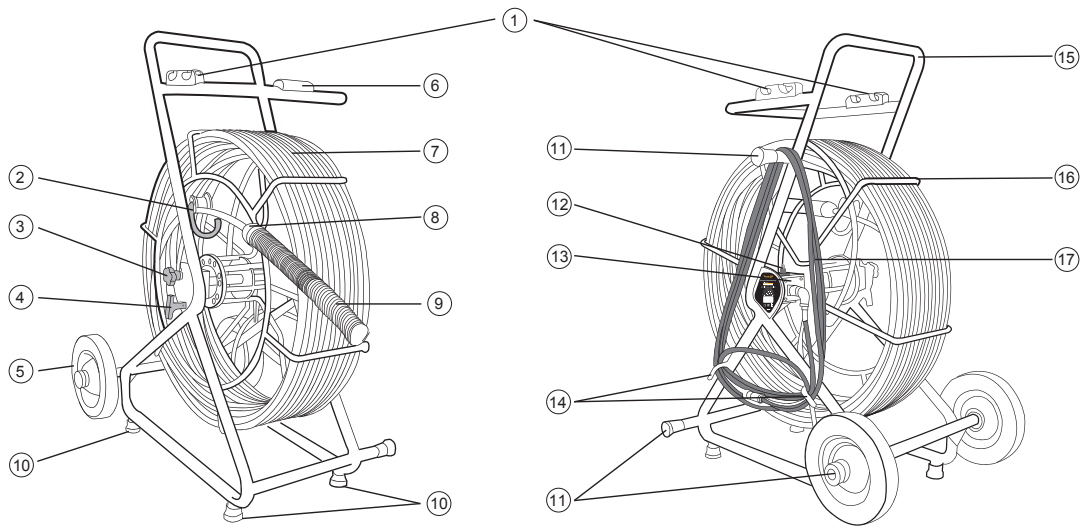
All vCam series reels with pushrod are supplied with:

- 1. Interconnect Lead** - The interconnect cable connects the reel to the control module and sends the raw video signal and distance of pushrod deployed to the control module. From the control module, this cable allows control of the sonde and camera head lighting.
- 2. Insertion Sleeve** – The insertion sleeve is inserted into the mouth of the pipe to prevent the pushrod from making direct contact with the pipe when deploying. This prevents the chafing of the pushrod jacket, and the result will be prolonged life of the pushrod.




### 2.4.2 Type-CP Standard Reel

The Type-CP standard reel is available in 200 ft. / 60m, 300 ft. / 90m, and 400 ft. / 120m of standard (12mm diameter) pushrod cable. The Type-CP reel includes 8 in. / 203 mm diameter solid rubber wheels for easy transport. The Type-CP reel can be used either in the vertical upright position or on its side in a horizontal position. The Type-CP reel has mounting brackets to lock the control module in place on top of the reel.



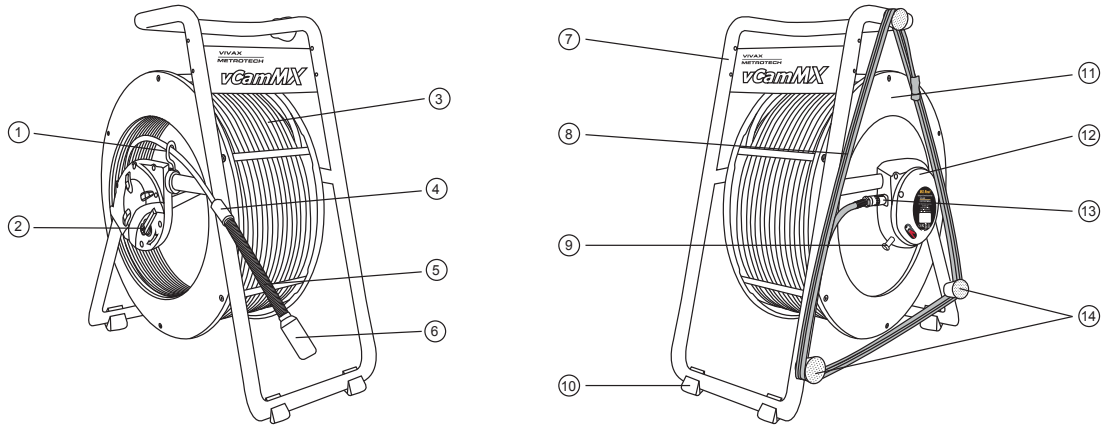
**Type-CP Standard Reel**

1	<b>Mounting Blocks</b>	For mounting and locking the vCam-6 control module in place.
2	<b>Cable Guide Assembly</b>	It helps control the deployment and retrieval of the pushrod cable by keeping it in a localized area.
3	<b>Friction Brake</b>	To control the speed at which the cage spins.
4	<b>Locking Brake</b>	To lock the cage in place for transport.
5	<b>Wheels</b>	Tilt the reel back by the handle and use the wheels for easy transport.  <b>WARNING</b> Do not use the control module as a handle to move the reel. Use the handle on the reel only.
6	<b>Keyboard Lid Resting Block</b>	When open, the control module lid rests on this block to keep it level.
7	<b>Pushrod Cable</b>	The Type-CP standard reel is available in 200 ft. / 60 m, 300 ft. / 90 m, and 400 ft. / 120 m of standard (12 mm diameter) pushrod cable.
8	<b>Sonde</b>	The sonde locate signal emits from this cup. This locate signal can be picked up on the surface by a utility or sonde locator with matching frequency.
9	<b>Spring Termination Assembly</b>	Attaches to the pushrod and gives the flexibility to lead the pushrod through bends in the pipe.
10	<b>Rubber Feet, bottom</b>	They help to keep the reel in place on slippery surfaces and to protect finished floors.
11	<b>Horizontal Position Legs</b>	They allow the reel to be used on its side in a horizontal position.
12	<b>Pushrod Trace Post</b>	Connect the hot lead of a utility locator transmitter to the rod trace post and the ground lead to earth to send a locate signal through the entire length of pushrod.
13	<b>Counter Block Assembly</b>	It contains the electronics used for distance counting and pushrod tracing. The serial number label is mounted to the side of the assembly.
14	<b>Cable Hooks</b>	To store the interconnect cable in place when not in use.
15	<b>Reel Frame</b>	Holds the cable cage in place and allows for easy transport of the reel.
16	<b>Pushrod Cable Cage</b>	Houses the pushrod and allows deployment and retrieval of the pushrod.
17	<b>Interconnect Cable</b>	Provides control module to reel connection for video feed, sonde operation, distance counting, and camera LED lights.



**2.4.3 MX Mini Reel**

The MX mini reel is a smaller portable, hand-carried reel available in 100 ft. / 30 m or 150 ft. / 45 m of mini (10 mm diameter) pushrod cable.



**Type-MX Mini Reel**

1	Cable Guide	8	Interconnect Cable
2	Friction and Locking Brake	9	Rod Trace Post
3	Pushrod	10	Rubber Feet
4	Sonde	11	Frame
5	Termination Spring	12	Pushrod Reel Connection Hub
6	Camera	13	Interconnect Cable Socket
7	Reel Drum	14	Horizontal Position Feet

## 3. Initial Control Module Setup

### 3.1 Initial Control Module Setup

#### 3.1.1 Installing the Fuse

Install the 10 Amp - 250 Volt fuse in the fuse compartment on the back of the control module. The control module will operate without a fuse when using AC power, but the battery will not charge, and the unit will turn off when the AC power is removed.

The fuse holder is located at the bottom left-hand area on the back of the control module. Two 10 Amp 250 Volt fuses are included in the control module accessory bag, one for the unit and one spare.

1. Use a screwdriver to unscrew and remove the fuse holder cap. Be sure to use the correct size screwdriver to prevent breaking the fuse holder slot.



2. Insert the 10 Amp 250 Volt fuse into the fuse holder cap.



3. Screw the fuse holder cap with fuse into the control module by hand as far as possible then use a screwdriver to tighten.



#### 3.1.2 Charging the Internal Battery

Plug the supplied power cable into a live electrical socket. The charging icon on the front panel of the control module will glow red while charging and glow green when fully charged. The typical charging time to fully charge a completely discharged battery will be approximately five hours and provide approximately five hours of use.

### 3 Initial Control Module Setup

#### 3.1.3 The Interconnect Cable

To bring the video onto the screen, plug the reel's interconnect cable into the control module. This is a key plug and socket, so be sure to line up the red dot on the interconnect cable plug to the same red dot on the interconnect socket on the control module. Pull back the knurled ring on the connector and insert it into the socket, release the knurled ring. Check that the connection is secure by giving a slight wiggle and tug. To remove the interconnect cable, pull back the knurled ring and pull the plug out.



Keyed Connector

If a reel with a camera attached is not available or inconvenient, then plugging a camera head into the camera test port will have the same results.

#### 3.1.4 About Control Module Settings

The initial setup of the vCam-6 control module is done with the keyboard. A USB or wireless mouse can also be used. All the settings selected are saved into the control module's memory and will remain until changed. Note that the settings will be lost if the unit is reset to factory defaults, running certain firmware updates or by formatting the hard drive. The reel and camera do not need to be connected to the control module for the first-time setup.

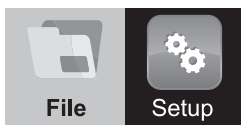
The initial control module will set the default storage for videos and pictures, metric or imperial distance measurement, date and time formats, sonde frequencies, language, and type of reel being used with the control module.

### 3.2 Navigating through the Setup Menu

It is recommended to set your language first so that all the other menus can be easily read and understood. See section 3.2.2 Setting the Control Module Language on setting the system language.

If the control module is attached to a reel with a camera or a camera head is inserted into the camera test port, a video image will be shown on the screen. While working in the Main or Setup Menus, the video image will still be shown, but it will appear darkened.

The vCam-6 control module has two main menus, the File menu and Setup menu. Both main menus contain sub-menus.

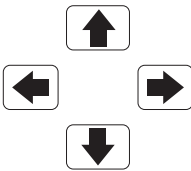




This section will concentrate on the **Setup Menu**.




Pressing the keyboard **F10** key once will bring up the **File** menu, pressing twice will bring up the **Setup** Menu. Pressing the **ESC** key twice will close either menu and return to the main viewing screen.

### 3.2.1 Keyboard Keys used in the Setup Menu

	<p><b>Directional Arrows:</b> Pressing the directional <b>up</b> ↑ and <b>down</b> ↓ arrow keys moves through the list of options in the <b>Setup</b> menu. As the <b>up</b> ↑ / <b>down</b> ↓ arrow keys are moved, the selection is highlighted in yellow. Stop on the desired option, then press <b>Enter</b> or use the <b>right</b> ➡ arrow key to see the choices within the selected menu option.</p>
	<p><b>Enter Key:</b> Pressing the <b>Enter</b> key will confirm the selected item. Furthermore, pressing the <b>Enter</b> key while in a sub-menu will confirm the selection with a green check-marked box .</p>



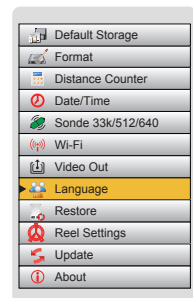
**NOTE**  
The green check-marked box is used in the **Default Storage, Distance Counter, Sonde, Video Out, and Reel Selection Options.**

	<p><b>ESC Key:</b> Pressing the <b>ESC</b> key while in any menu or sub-menu will take the screen back to the previous menu. Press the <b>ESC</b> key repeatedly to return to the main viewing screen.</p>
---	--



**NOTE**  
This user handbook will cover each item in the **Setup** menu, starting with the **Language** sub-menu. After that, the user handbook will cover each item in the **Setup** menu order from top to bottom.

i.e., **Language**, then **Default Storage, Format, Distance Counter, and so on.**



### 3.2.2 Setting the Control Module Language

1. Press the **F10 Menu** key twice to bring up the **Setup** menu.
2. Use the **down** ↓ arrow key to highlight the **Language** option.
3. Press **Enter** or use the **right** ➡ arrow key to move into the sub-menu with the list of languages.
4. Use the **down** ↓ arrow key to highlight the desired language to use.
5. Press the **Enter** key to confirm the choice.



6. A dialog box will appear stating the system will reboot to complete the change.
7. Press the **Enter** key to select **OK** to complete the process. The control module will re-boot, and the language will be changed when it starts again.

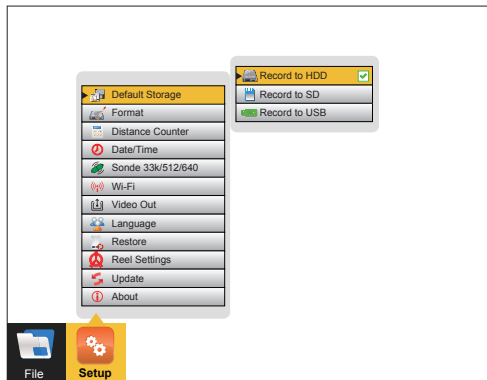


**WARNING**  
The control module must reboot to make this change.

### 3.2.3 Setting the Default Storage

Setting the Default Storage selects which drive (SD, Hard Drive, or USB) will be used as the default. If the hard drive is selected, all video recordings and pictures will be saved to this drive. If SD or USB is selected as the default, this setting will be lost when the SD card or USB drive is removed from the control module.

1. Press the **F10 Menu** key twice to bring up the **Setup** menu.
2. Select the **Default Storage** option at the top of the selection list.
3. Press **Enter** or use the **right** ➡ arrow key to move to the sub-menu with the list of options.

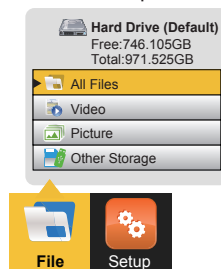


**NOTE**  
SD and USB drives will only be shown if their devices are plugged into the control module at this time.



**NOTE**  
If the SD or USB drives are set as default, when the SD or USB is removed, the Hard Drive will be reset as the default drive.

4. Use the **down** ↓ and **up** ↑ arrow keys to select the default storage choice.
5. Press the **Enter** key when the choice is highlighted, and the white box will be filled with a green check confirming the selection.
6. Press the **ESC** key to return to the main **Setup** menu, press **ESC** key twice to return to the main viewing screen.
7. From the main viewing screen, press the **F10** key once to bring up the **File** menu. At the **top of the main File** menu, the selected default drive is shown along with the amount of free space available and the total size of the drive.



### 3 Initial Control Module Setup

#### 3.2.4 Setting the Distance Counter

The distance counter sets the unit of measurement to be used. The choices are imperial (feet) or metric (meters). The distance of pushrod deployed will be shown on the main screen above the status bar and will appear in videos and pictures when this feature is activated by using the **F2 Info** key.



#### NOTE

The distance counter is for reference only. It is important that you verify the actual position and depth with a Sonde Locator or Pipe & Cable Locator before excavating.

1. Press the **F10 Menu** twice to bring up the **Setup** menu.
2. Use the **down** ↓ arrow key to scroll down to the **Distance Counter** selection.
3. Press **Enter** or use the **right** → arrow key to bring up choices of **Feet** or **Meters**.
4. Use the **up** ↑ / **down** ↓ arrow keys to highlight the choice.
5. Press the **Enter** key when the choice is highlighted, and the white box will be filled with a green check confirming the selection.



6. Press the **ESC** key to return to the main **Setup** menu, press **ESC** twice to return to the main screen.

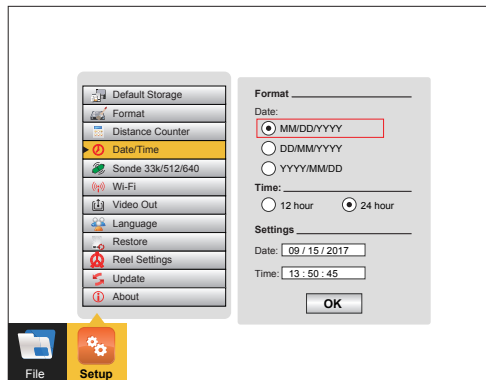
#### 3.2.5 Setting the Date, Time and Format

Setting the date/time allows the choice of three date formats, 12 or 24-hour time format, and sets the date and time of the control module. The date and time will appear along with the distance of pushrod deployed will be shown on the main screen above the status bar and will appear in videos and pictures when this feature is activated by using the **F2 Info** key.

Date formats available are: **MM/DD/YYYY**, **DD/MM/YYYY** and **YYYY/MM/DD**.

1. Press the **F10 Menu** twice to bring up the **Setup** menu.
2. Use the **down** ↓ arrow key to scroll down to the **Date/Time** option.
3. Use the **down** ↓ and **up** ↑ arrow keys to move between the three date formats. When the selection is made, and the red dot appears in the radio box, it is time to move to the time options.
4. Navigate to the **OK** button and then press the Enter key when done.

### 3 Initial Control Module Setup



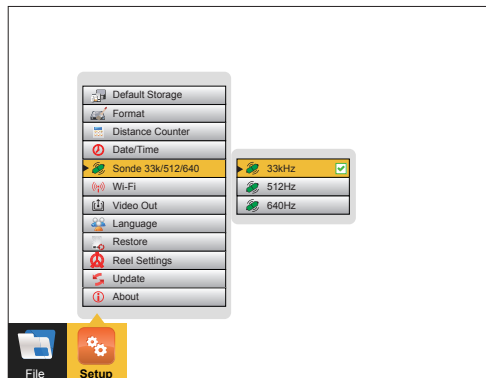
#### NOTE

Pressing the Enter key at any time will save the changes made. This allows separate changes to be made at any time to either the time, time format, or date without having to move through the entire selections available.

#### 3.2.6 Setting the Sonde Frequency

Setting the Sonde frequency allows selection of either 33kHz, 512Hz, or 640Hz frequencies when the Sonde On/Off button is pressed. Typically, 33kHz or 640Hz is used in Europe and the UK, while 512Hz is used in North America. One, two or all three frequencies can be added to the control module.

1. Press the **F10 Menu** key twice to bring up the **Setup** menu.
2. Use the **down** ↓ arrow key to scroll to the **Sonde Frequency** selection.
3. Press **Enter** or use the **right** → arrow key to bring up the sonde frequency choices.



4. Use the **up** ↑ and **down** ↓ arrow keys to make your selection and press the **Enter** key after each selection.
5. Press the **ESC** key to return to the main **Setup** menu, press **ESC** twice to return to the main screen.



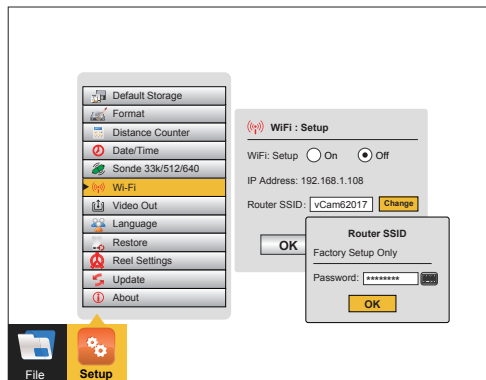
#### NOTE

If the sonde frequency was changed in the setup menu while the sonde was active, the change would not take effect until you turn the sonde off and then on again.

### 3 Initial Control Module Setup

#### 3.2.7 Wi-Fi Administration

The Wi-Fi administration sets the SSID, IP address, and password for the control module's Wi-Fi. This area is locked for factory and authorized repair use only.



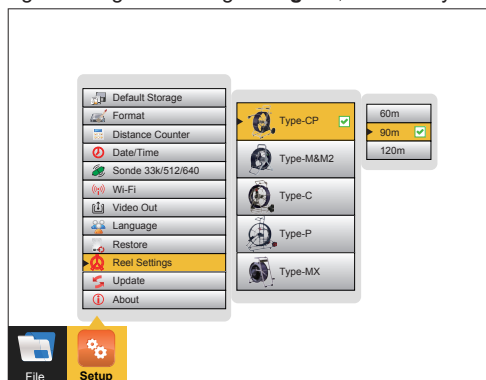
#### NOTE

This can be changed from this screen by an authorized service center or the factory. Please call to schedule an appointment to walk through the procedure. Using a wireless or wired USB mouse is recommended for this setting change.

#### 3.2.8 Setting the Reel Type

This control module can be used with several types of Vivax-Metrotech pushrod reels. Selecting the correct reel-type helps the control module calculate the distance of the pushrod deployed into a pipe. Know beforehand which model of reel and length of pushrod will be used.

1. Press the **F10 Menu** twice to bring up the **Setup** menu.
2. Use the **down** ↓ arrow key to scroll to the **Reel Settings** selection.
3. Press **Enter** or use the **right** ➡ arrow key to enter the reel choices sub-menu.
4. Use the **up** ↑ and **down** ↓ arrow keys to highlight the reel model type. Note that the Type-M and Type-CP reels offer a choice of pushrod length by pressing **Enter** again or using the **right** ➡ arrow key.



5. Highlight the reel choice and sub-menu length choice if applicable.
6. Press the **Enter** key to save the changes.
7. Press the **ESC** key to return to the main **Setup** menu, press **ESC** twice to return to the main screen.



#### NOTE

The distance counter is for reference only. It is important that you verify the actual position and depth with a Sonde Locator or Pipe & Cable Locator before excavating.

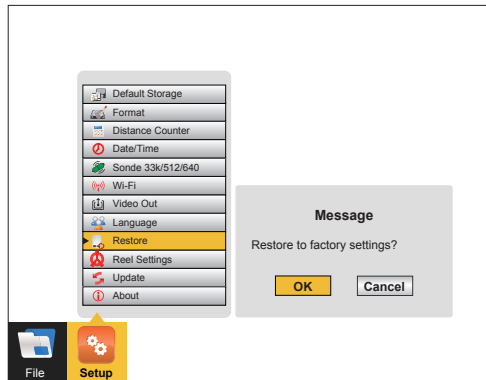


### 3 Initial Control Module Setup

#### 3.2.9 Restore the Factory Default Settings

Restoring the default settings will erase all the settings on the control module and return it to the factory default. This will not erase any videos or images on the hard drive.

1. Press the **F10 Menu** twice to bring up the **Setup** menu.
2. Use the **down** ↓ arrow key to scroll down to the **Restore** selection and press **Enter**.



3. Use the **left** ← and **right** → arrow keys to select **OK** or **Cancel**.
4. Pressing **OK** will restore all settings to the default factory settings. **Cancel** will cancel the operation, and no changes will be made.

#### 3.2.10 Update the Control Module Firmware

This option allows the upgrading of the control module's firmware (software). Firmware upgrades come in the form of ".bin" (for DVR updates) and ".soc" (for processor updates) extension files. It may be necessary to upgrade one or both. The order in which they are updated does not matter. The firmware files can be obtained from our website, an authorized service center, or the local Vivax-Metrotech office. USB thumb drive or SD cards can be used to perform the update.

The firmware update files must be installed on the **SD or USB devices "root directory."** Specifically, the files must be visible when viewing the contents of the SD or USB device. The files **cannot be compressed or in a folder**.



**WARNING**  
DO NOT INTERRUPT THE UPDATE ONCE IT HAS STARTED.

Update the firmware with the control module while running under AC power.

Some updates will delete any videos or images on the control module's hard drive. It is highly recommended that you move these videos and images from the hard drive to a PC or Laptop.

Check the "read me" text file that comes with the firmware update files for any specific hardware or version information on the control module. Certain Microcontroller Unit (MCU) updates are limited to early hardware versions.

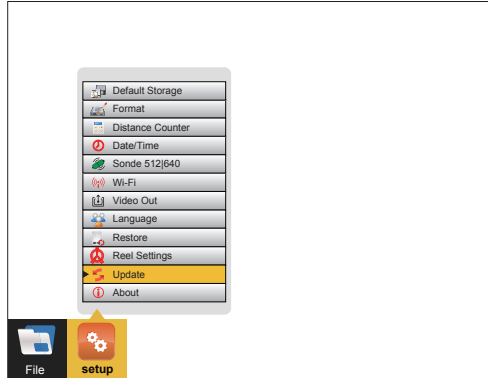
Wait, the control module will reboot after the firmware installation is complete. Leave the control module alone until it reboots. Some time may lapse between the progress indicator disappearing and the re-boot.



**TIP**  
Make a note of the control module's current software version before running the update. When the update is completed, you can compare the before and after versions.

### 3 Initial Control Module Setup

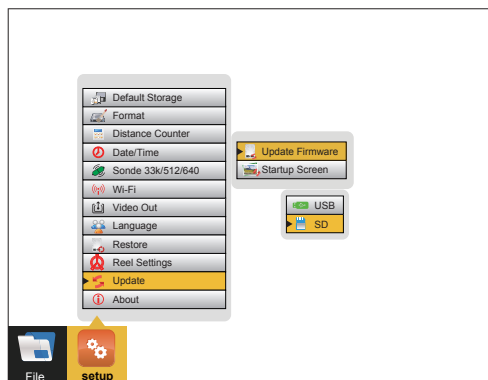
1. Extract the firmware update files and copy the .bin and/or .soc file to an SD or USB device. **The files must be on the root drive of the drive or card, i.e., the files must not be compressed or in a folder on the device.**
2. Plug the SD or USB device into the control module.
3. Press the **F10 Menu** key twice to bring up the **Setup** menu.
4. Use the **down** ↓ arrow key to scroll down to the **Update** sub-menu. Press the **Enter** key.



5. Use the **up** ↑ and **down** ↓ arrow keys to highlight and select **Update Firmware** and press the **Enter** key.

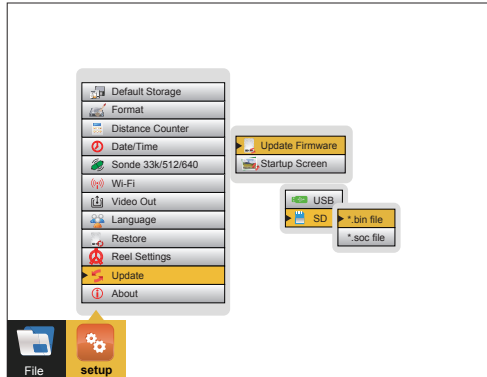


6. Use the **up** ↑ and **down** ↓ arrow keys to select either the SD or USB device, which has the firmware loaded onto it. Press the **Enter** key.

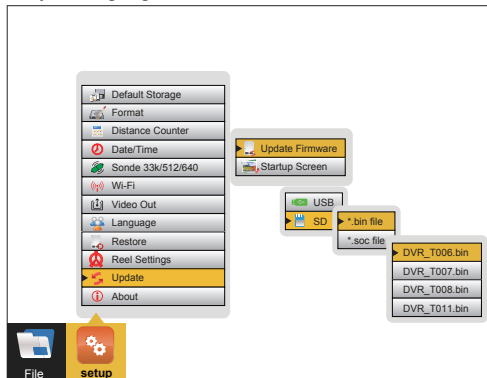


### 3 Initial Control Module Setup

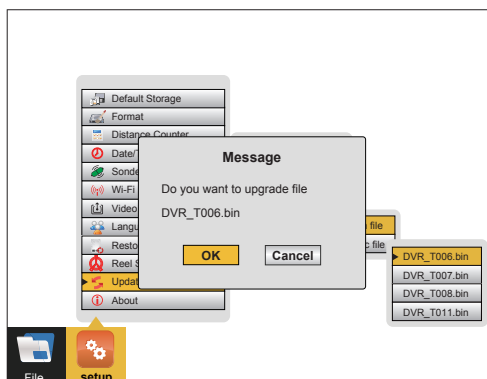
- Use the **up** ↑ and **down** ↓ arrow keys to select which type of file is being used for the update, .bin or .soc and press **Enter** key.



- Use the **up** ↑ and **down** ↓ arrow keys to highlight and select the .bin or .soc file and press **Enter** key.

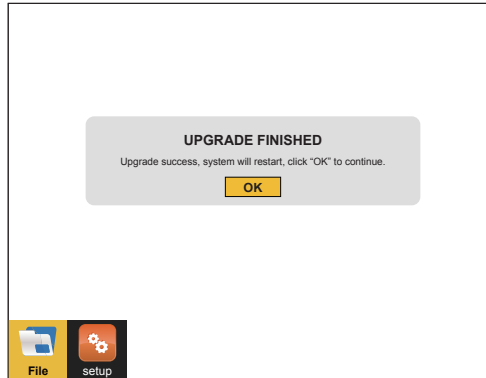


- A dialog box should appear confirming the firmware update. Use the **left** ← and **right** → arrow keys to select **OK** or **Cancel** and press the **Enter** key.



### 3 Initial Control Module Setup

- The update is now in progress, and a progress indicator will appear. Leave the control module running, and **do not interrupt** the update. The control module will re-boot when it is finished. **The control module must re-boot to complete the update.**



- Repeat these steps if both the .bin and .soc files need to be updated.
- Verify that the firmware update was successful by checking the firmware version in the **About** section of the setup menu.

#### 3.2.11 Update the Control Module Start Screen

This option allows the personalization of the second start screen seen when the control module is starting. A company name, logo, and phone number is an example of how to customize this screen. Any image, text, or logo can be used as long as it is in a JPEG image format.

To use a picture, it must be:

- JPEG format
- 24-bit or 32-bit color depth
- 700 x 480 pixels
- 96 dpi

If larger or smaller images are used, the picture seen on the screen may be distorted.

- Load the jpeg format image file onto an SD or USB device.
- Insert the device containing the jpeg image into the control module's SD or USB port.
- Follow steps 1 through 5 in section 3.2.10. Update the Control Module Firmware, on how to update the firmware. Use the **right** ➡ arrow key to highlight and select the **Startup Screen** selection and press the **Enter** key.
- Use the **up** ⬆ and **down** ⬇ arrow keys to select the USB or SD device from the sub-menu, which has the image file loaded onto it. Press the **Enter** key.

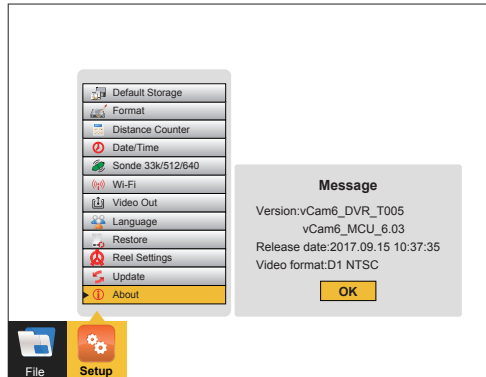
### 3 Initial Control Module Setup

#### 3.2.12 The About Screen

The about screen shows the control module's current "firmware" (software) version, the firmware release date, and the current video format (NTSC or PAL and SD or HD) being used. The two types of firmware are (1) the DVR and (2) the MCU.

You will be asked for the firmware version if calling for technical support.

1. Press the **F10 Menu** twice to bring up the **Setup** menu.
2. Use the **down** ↓ arrow key to scroll down to the **About** selection.
3. Press **Enter** and the firmware version information will be displayed.

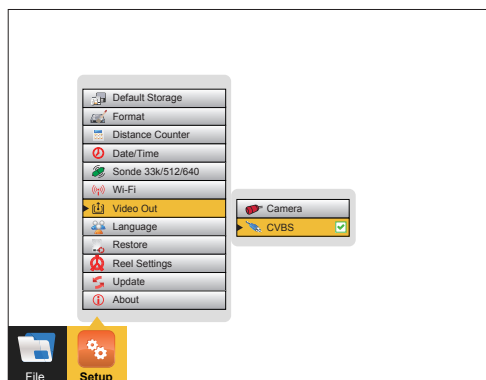


4. Use the **left** ← arrow key or **ESC** key to return to the **Setup** menu.

#### 3.2.13 Video Out

When using the video out socket with certain LACP Observation Software, changing the video out setup may be needed. Check with the software manufacturer if this setup option is required.

1. Press the **F10 Menu** twice to bring up the **Setup** menu.
2. Use the **down** ↓ arrow key to scroll down to the **Video Out** selection.
3. Press **Enter** and the choices of **Camera** and **CVBS** are shown.



4. Use the **up** ↑ and **down** ↓ arrow keys to make the selection. Press the **Enter** key.
5. Use the **left** ← arrow key or **ESC** key to return to the **Setup** menu.

## 4. Video Recording and Picture Image Capture

### 4.1 Overview


This section of the manual covers video recording, capturing images, reviewing videos and pictures, and copying, moving and deleting video and picture files. To accomplish these items, we must understand the menu system, file system, and navigation in them.

### 4.2 Main File Menu

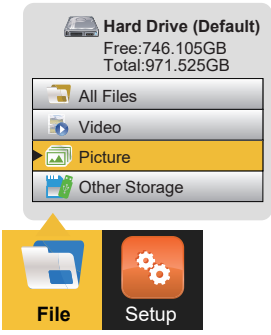
The vCam-6 control module uses a cascading menu system that primarily uses the **left** ←, **right** →, **up** ↑, **down** ↓ arrow keys, **Enter**, and **ESC** keys to move through the menus and sub-menus. A yellow bar will always highlight the current position and selection. A wireless mouse can also be used to move around the menus. Although this may not be a practical feature to use in the field, it may be helpful when working in the office.

The menu system consists of:

- a. Main File menu
- b. File List sub-menu
- c. File Option sub-menu
- d. Media Select sub-menu

Use the **F10 Menu**  key to bring up the main **File** menu.

The main **File** menu contains four parts. From top to bottom they are:

	<ol style="list-style-type: none"> <li>1. <b>All Files</b> – The <b>All Files</b> section of the main menu will show both picture files and video files on the hard drive or other storage. Use the <b>right</b> → arrow key to advance to the next sub-menu (file list sub-menu) to see the list of pictures and videos stored on the control module's hard drive, SD, or USB device.</li> <li>2. <b>Video</b> – The <b>Video</b> section of the main menu will show only video files on the hard drive or other storage. Use the <b>right</b> → arrow key to advance to the next sub-menu (file list sub-menu) to see the list of video recordings stored on the control module's hard drive, USB drive, or SD card.</li> <li>3. <b>Picture</b> – The <b>Picture</b> section of the main menu will show only picture files on the hard drive or other storage. Use the <b>right</b> → arrow key to advance to the next sub-menu (file list sub-menu) to see the list of pictures stored on the control module's hard drive, SD, or USB device.</li> <li>4. <b>Other Storage</b> – Allows viewing of both videos and pictures on an SD or USB device that is currently plugged into the control module. In the other storage view, the total size and amount of free space of the SD or USB device can be seen.</li> </ol>
---	---

**To view the contents of a USB thumb drive or SD card:**

5. Insert a USB thumb drive or SD card into the control module.
6. Use the **down** ↓ arrow key to select and highlight **Other Storage**.
7. Use the **right** → arrow key to advance to the next sub-menu (file list sub-menu) to see the list of JPEG images stored on the control module's SD or USB device that is currently plugged into the control module.



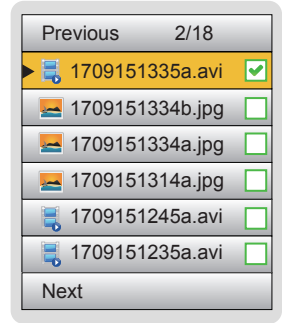
**NOTE**

Only videos or pictures that were originally created in the control module will appear in the file list sub-menu and be viewed on the control module.

### 4.2.1 File List Sub-Menu

The file list sub-menu shows the list of files, videos, and or pictures, which are on the hard drive. Contents of an SD or USB device can also be viewed if they are currently plugged into the control module. In the video file list sub-menu pausing on a video file will start a preview window, the file preview dialog box will also show the length of the video and its size in MB.

#### File Select Sub-Menu

	<ol style="list-style-type: none"> <li><b>Next page scroll direction</b> – Scroll to the next page of files by using the <b>Page Down</b> key.</li> <li><b>Page number</b> – Indicator of which page number and the total number of pages.</li> <li><b>Filename</b> – Filename consist of YY MM DD HH MM. When multiple pictures are taken within one minute of time, an alpha character will be added to the end of the file name.</li> <li><b>Selection checkbox</b> – Pressing the <b>Enter</b> key while on a highlighted file will add a green checkmark. Use this to select multiple files.</li> <li><b>Previous scroll direction</b> – Scroll to the previous page of files by using the <b>Page Up</b> key.</li> <li><b>Picture/video icon</b> – While viewing all files, this icon describes a video or a picture file.</li> </ol>
---	---

From the main File menu, use the **right** ➡ arrow key to move to the file list sub-menu.

The **up** ⬆ and **down** ⬇ arrow keys move through the list of video or picture files in the file list sub-menu. The current file selected is always highlighted in yellow and will have a green outlined checkmark to the right. Press the Enter key while on a highlighted file will add a green checkmark to the right of the file name. Multiple files can be selected by moving from file to file with the **up** ⬆ or **down** ⬇ arrow keys and pressing **Enter** on each file to be selected.

**Moving from page to page** - The file list sub-menu may contain multiple pages, with six files per page. The top right section of the sub-menu shows the current page and the total number of pages. For example, if “2/14” is showing, this means page two is the current page out of a total of 14 pages.

Method one – Use the **Page Up**  and **Page Down**  keys to move between pages.

Method two – Use the **up** ⬆ / **down** ⬇ arrow keys to highlight the bottom row **Next** or the top row **Previous**. After the **Next** or **Previous** row is highlighted, use the **left** ⬅ or **right** ➡ arrow keys to move either forward or backward a page at a time.

#### Selecting multiple files:

Each file in the file list sub-menu has a green outlined box to the right of the file. Highlight a file in the list and press the **Enter** key, now the box to the right will show a green check symbol in it. Repeat these steps for each file you wish to select. Multiple files can be copied across several pages.



**TIP**  
Use the **TAB** key while in the File Select sub-menu to select the entire page of videos or pictures.



**TIP**  
In the video file list sub-menu momentarily pausing on a file in the list will start a preview window, the file preview dialog box will also show the length of the video and its size in MB. Using the Text Writer during the start of the video recording will allow you to identify your target video easily. The text shown on the recorded video will also be seen during the video preview.

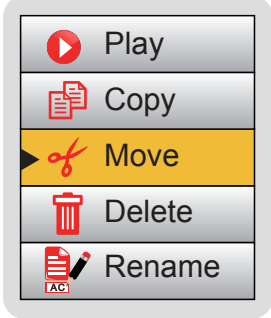


**NOTE**  
The video preview should take four to five seconds to appear and start playing. The fewer videos you have on the hard drive, the faster the preview will begin. When the hard drive fills with videos and pictures, the preview will take longer to pop up and play.

### 4.2.2 File Option Sub-Menu

The **File Option** sub-menu shows the options available for files selected in the previous file list sub-menu.

The **File Options** sub-menu consist of:

	<ol style="list-style-type: none"> <li><b>1. Play Video or View Picture</b> – The <b>Play</b> option will start playing the recorded video or view an image file. Pressing the <b>ESC</b> key twice will stop the playing video or close the image view and return to the previous sub-menu.</li> <li><b>2. Copy Video or Picture</b> – The <b>Copy</b> option will make a copy of the selected video(s) or picture(s) and copy it to a USB drive or SD card. The <b>Copy</b> option makes a copy of the video or picture and leaves the original on the default storage drive.</li> <li><b>3. Move Video or Picture</b> – The <b>Move</b> option will remove the selected original video(s) or picture(s) from the default drive and move it to the USB drive or SD card. No copy of the file will remain on the default drive.</li> <li><b>4. Delete Video or Picture</b> – The <b>Delete</b> option will delete the selected video(s) or pictures(s) from the default drive. No copy is retained, and a file cannot be recovered after it is deleted.</li> <li><b>5. Rename Video or Picture</b> – The <b>Rename</b> option allows the re-naming of files on the control module's hard drive. When selected, up-to 20 alpha-numeric characters can be used to rename the file.</li> </ol>
---	--



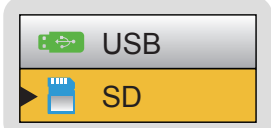
**NOTE**




Files moved off of the control module hard drive cannot be placed back on the control module. Files deleted from the control module cannot be recovered.

### 4.2.3 Media Select Sub-Menu



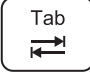


The **Media Select** sub-menu will show the media available (SD or USB device) available (plugged in) and select the destination of the file being copied or moved.

Media Select sub-menu options

	<ol style="list-style-type: none"> <li><b>1. USB</b> – Selecting <b>USB</b> will move the selected video(s) or picture(s) to the USB thumb drive that is plugged into the control module.</li> <li><b>2. SD</b> – Selecting <b>SD</b> will move the selected video(s) or picture(s) to the SD card that is plugged into the control module.</li> </ol>
---	--

	<p><b>F10 Menu key</b></p>	<p>Press once to bring up the main file menu, press again to bring up the setup menu. The main file menu is the day-to-day menu used most often, while the setup menu is used to make changes to the control module functions or options.</p>
	<p><b>Left and Right arrow keys</b></p>	<p>The <b>Left</b> and <b>Right</b> arrow keys move through the file sub-menus.</p>
	<p><b>Up and Down arrow keys</b></p>	<p>The <b>Up</b> and <b>Down</b> arrow keys scroll the list of video and picture files in the file list sub-menu, scrolls the choices in the file option sub-menu, and scrolls the options in the media select sub-menu.</p>



	<p><b>Enter</b></p> <p><b>File List sub-menu</b></p> <p><b>File Option sub-menu</b></p> <p><b>Media Select sub-menu</b></p>	<p>Pressing the enter key while in the;</p> <p>Select the file by adding the green checkbox to the far right.</p> <p>Start the action of playing, copying, move, or deleting.</p> <p>Start the file movement to the SD or USB drive.</p>
	<p><b>Page Up and Page Down</b></p>	<p>The <b>Page Up</b> and <b>Page Down</b> keys will scroll one complete page at a time through the file list sub-menu.</p>
	<p><b>Tab</b></p>	<p>Use the <b>Tab</b> key while in the file select sub-menu to select the entire page of videos or pictures.</p>
	<p><b>ESC</b></p>	<p>Use the <b>ESC</b> key while in any menu or sub-menu to step back one step. Press the <b>ESC</b> key repeatedly to return to the main viewing screen. Pressing the <b>ESC</b> key while in a file copy or movement will stop that operation.</p>
	<p><b>F1 Help</b></p>	<p>The <b>F1 Help</b> key will display give a brief overview of the options and commands of the control module.</p>

### 4.3 Video Recording and Playback Controls

Video recordings will be saved to the default drive selected in the initial control module setup.

By default, all videos and pictures will be saved to the internal hard drive. If recording directly to an SD or USB device, insert the device and make sure the default drive is set to either the SD or USB device.

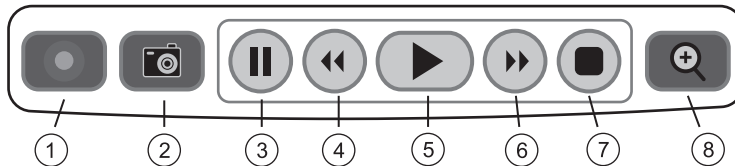


**TIP**  
Leave the hard drive as the default drive. The contents of the hard drive can be copied to USB drives or SD cards while still retaining the original videos and pictures.




**TIP**  
Keep as much free space on the hard drive as possible. The menu system will work more efficiently with fewer files on it. Keeping the hard drive free also limits loss in the case of a catastrophic event.

Recording, Picture Capture, Playback, and Zoom Controls (top panel)




<p>1</p>	<p><b>Start Recording</b></p>	<p>Use this key to start a recording. A red flashing recording icon will appear on the bottom-left section of the status bar on the screen, and the elapsed recording time will appear bottom center.</p>
<p>2</p>	<p><b>Picture Capture</b></p>	<p>Use this key to take a jpeg format picture from live video, from the current recording session or from video playback. The picture icon will momentarily appear on the status bar, confirming that a picture was taken.</p>

3	<b>Pause Recording</b>	<p>Press the <b>Pause</b> key to pause the recording video. While the video is paused, the pause icon will appear on the bottom-left section of the status bar on the screen, and the elapsed recording time will pause.</p> <p>To resume recording, press the <b>Pause</b> key again, and the pause icon will be replaced by the recording icon.</p> <p><b>NOTE</b>   <b>When a recording is paused, the system clock keeps running. When playing back the video, you will see a jump forward in the time shown on the video. (If the clock was showing while the video was recording).</b></p>
4	<b>Rewind Video Playback</b>	Use this key to rewind the currently playing video. Press up to three times again to increase the rewind speed.
5	<b>Play Video</b>	Use this key to play a video from the File Select list or to resume playing a paused video.
6	<b>Forward Video Playback</b>	Use this key to forward through the currently playing video. Press up to three times again to increase the forward speed.
7	<b>Stop Recording</b>	Use this key to end a video recording session. The recording will stop and be saved to the default drive. Also, use this key to stop a video being played in the control module.
8	<b>Digital Zoom</b>	Use this key to zoom in on live video, recorded video, or jpeg captures. Press once to bring up the red zoom box on the screen. Move the zoom box to the area to be magnified in on and press the <b>Enter</b> key. While the zoom box is shown press up to three times more to increase the digital zoom level.

### 4.3.1 Making a Video Recording

Videos will be saved to the default drive you selected in the initial control module setup. If no other drive is selected, the videos will be saved on the internal hard drive.


1. Press the **Record**  icon on the top panel keypad.
2. The recording icon will appear on the status bar on the screen. When the record icon starts flashing, the recording begins. In the center of the status bar, the elapsed recording time will be displayed in hours, minutes, and seconds.
3. The video will continue to record until the video is stopped by pressing the **Record** key again or using the **Stop** key.

During a video recording, the following options are operational and usable:

- Wi-Fi
- Sonde
- Microphones
- Full-Text writer
- Camera LED control
- Distance counter reset
- F9 Display adjustments
- Take a JPEG image picture
- Pause the video for up to 30 minutes
- Use the digital zoom to view close up (view only, the zoom effect will not be recorded)
- Pushrod tracing (some interference may occur on the LCD)

### 4.3.2 JPEG Image Picture Capture

Pictures will be saved to the default drive you selected in the initial control module setup screen. If no other drive is selected, the pictures will be saved on the internal hard drive.

1. Press the **Picture Capture**  key on the top panel keypad.
2. The picture icon and the picture file name will appear momentarily on the bottom left of the status bar confirming that the picture was taken and saved.

## 4 Video Recording and Picture Image Capture

- Pictures can be taken from live video, while a recording is in progress, or from a video being played back in the control module.



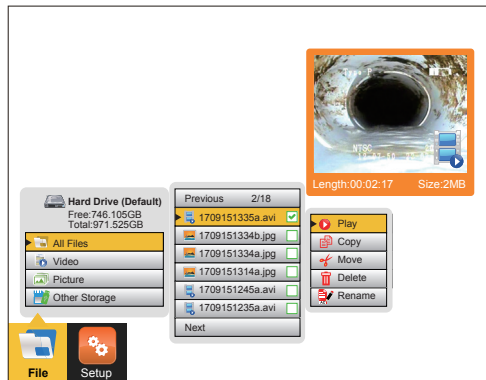
### TIP


Use the Text Writer feature to add identifying text to the recording video and image captures. Now while looking at the preview in the file list sub-menu, the text recorded on the video and pictures will help identify the target video or picture.

## 4.4 Play Videos and View Pictures in the Control Module

### To Play Video Files:

- Press the **F10 Menu** key to bring up the main **File** menu.
- Use the **right** ➡ arrow key to move to the file list sub-menu.
- Use the **up** ⬆ and **down** ⬇ arrow keys to scroll and highlight the video or picture to be viewed. When the file is highlighted, after a few seconds a preview of the video, its length and size will pop up.
- Press the **Enter** key to select and check  the file.
- Use the **right** ➡ arrow key to move to the **File Option** sub-menu.
- Use the **right** ➡ arrow key or press the **Enter**  key to play the video.



- To stop the video playback, press the ESC key twice to return to the file list sub-menu or press the **Stop**  key on the top keypad.
- During video playback the following options are operational and usable:
  - Wi-Fi
  - Rewind and fast forward
  - Take a JPEG image picture
  - Pause the video for up to 30 minutes
  - Use the digital zoom to view close up (view only)

### 4.4.1 View Picture Image Files:

- Use the steps shown in section 4.4 Play Videos and View Pictures in the Control Module.
- Only this time, you are using picture images rather than video files.

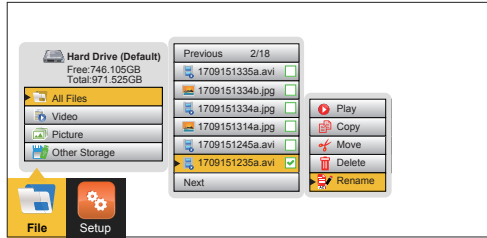
### 4.4.2 Renaming a Video or JPEG Image File

Video and picture files on the control module can be re-named from the default date format used. Filenames can be up to 20 alphanumeric characters. !@#%&^&\*() and . are characters that cannot be used to rename a file. After the file is renamed, the location of the file is still at the same location in the file list as originally placed by the default date format file name.

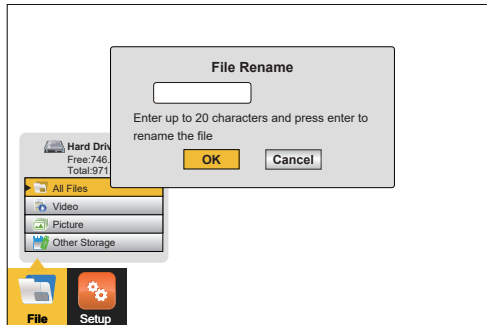
- Press the **F10 Menu** key to bring up the main **File** menu.
- Use the **right** ➡ arrow key to move to the file list sub-menu.
- Use the **up** ⬆ and **down** ⬇ arrow keys to scroll and highlight the video or picture to be viewed. When the file is highlighted, after a few seconds a preview of the video, its length and size will pop up.
- Press the **Enter** key to select and check  the file.

#### 4 Video Recording and Picture Image Capture

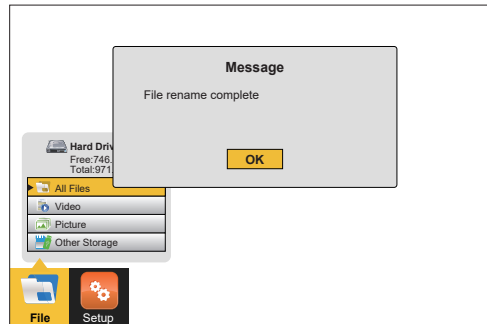
5. Use the **right** ➡ arrow key to move to the File Option sub-menu.
6. Use the **down** ↓ arrow key to scroll and highlight the **Rename** option and press **Enter**.



7. The file rename dialog box now appears. Enter up to 20 characters to rename the file and press the **right** ➡ arrow key to bring up the **OK** confirmation box and press **Enter** key.



8. The file rename confirmation message will appear and disappear after four seconds.



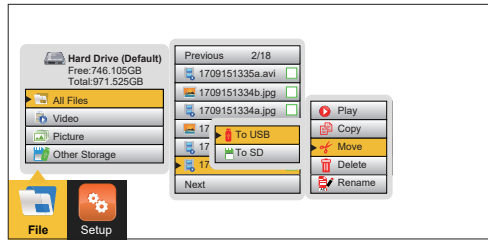
9. The file rename is now complete.

#### 4.4.3 Copy, Move or Delete Videos and Pictures

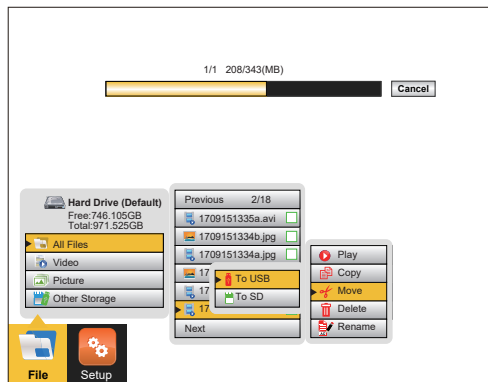
In the File Option, sub-menu files can be copied or moved to an SD or USB device, or they can be deleted from the hard drive.

1. Plug an SD or USB device into the appropriate slot in the control module to copy or move files. Be sure that there is enough space on the SD or USB device being used.
2. Press the **F10 Menu** key to bring up the main **File** menu. Use the **up** ↑ or **down** ↓ arrow keys to scroll to and highlight **Video**, **Pictures**, or **All Files**.
3. Press **Enter** or use the **right** ➡ arrow key to move to the file list sub-menu.
4. Use the **up** ↑ or **down** ↓ arrow keys to highlight and select by pressing the **Enter** key, the files to move, copy, or delete. Pressing the **Enter** key will place a green checkmark to the right of the file name.
5. Use the **right** ➡ arrow key to move to the file option sub-menu.
6. In the file, option sub-menu, use the **up** ↑ or **down** ↓ arrow keys to select **Copy**, **Move** or **Delete**.
7. If copying or moving files, select copy or move and use the **right** ➡ arrow key to move to the Media Select sub-menu. Select the destination for the file (SD or USB device) and press the **Enter** key to complete the action.

## 4 Video Recording and Picture Image Capture



8. During the copy or move process, a progress indicator bar will appear top center of the screen. This will show:
- The specific file out of the total number of files being processed
  - The total number of files to be processed
  - The size in MB already processed
  - The total size of all selected files
  - Cancel option



9. If deleting files, use the **down** ↓ arrow key to select **Delete** and press **Enter**.



### WARNING

Do not remove the SD or USB device from the control module while copying or moving files to them. This may result in corrupt un-playable files being created and the risk of corrupting the original file on the hard drive.

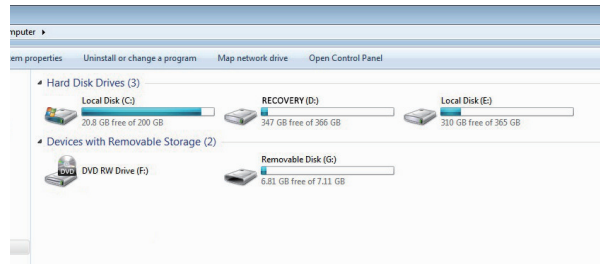
## 4.5 File Format of SD Cards and USB Devices

The vCam-5 and vCam-6 control modules will recognize USB thumb drives and SD cards that are formatted in the FAT32 or NTFS file system and a maximum size of 64GB for SD cards and 128GB for USB thumb drives. If other file formats are used, the control module will show an error message of “Not enough space on disk” when it is used to copy or move a file to it. The control module cannot read media in other formats, but it does know that a USB or SD card is plugged in, so it perceives the SD or USB device as being full.

In the Windows operating system, it is possible and common to have more than one type of disk drive. The most common is “Local” and “Removable” drives. SD and USB devices are in the “Removable” disk class. It is possible to convert an SD or USB device into a “bootable” drive and use it to run programs. When an SD or USB device is converted to a bootable disk, it is now classified as a “Local” disk. The control module will work with the removable disk but **not with a local disk**.

To check if your SD or USB device is a local disk or a removable disk plug it into any computer running any version of windows. Launch “My Computer” to see a screen similar to the illustration below. The illustration below shows the drives lettered C, E, and G as a local disk. These will not work in the control module. The second line shows drive "H" as a removable disk, which will work in the control module. If a disk is converted into a bootable disk, it is not possible to convert it back to a format that will work in the control module.

## 4 Video Recording and Picture Image Capture



### 4.6 Video Format

The vCam-6 control modules use the MP4 video format. MP4 files were created under the ISO/IEC 14496-12:2001 standard by the ISO/IEC and Motion Picture Experts Group (MPEG). Because of this, MP4 is an international standard for audio-visual coding.

### 4.7 Troubleshooting Video Playback

If a video file can be played in the vCam control module, it will be able to be played on a laptop or PC. If files cannot be played in the control module, it is possible the video file has become corrupt.

When files can be played in the control module but not in a PC, the following should be checked in this order.

**Default App and File Associations** – this tells the PC's operating which software program it should use to play the .mp4 files from the control module. File associations need to be set only one time and will stay set until manually changed or sometimes when a major windows update is run. Consult the Help section of your windows operating system for directions for setting the default app and file associations.

**Codecs** - the video and audio tracks in a file have been "encoded" or "coded" and must be "decoded" in the right way in order to play the file back. Therefore, a codec is needed (Coder / Decoder). A media player, such as WMP (Windows Media Player), may require a specific codec to be installed in order to play a specific type of video file. Consult the Help section of your video player program for information on downloading codecs.

**Corrupt Video Files** – some situations and circumstances may cause a .mp4 video file to become corrupt. Third-party software may be able to help with this situation.

### 4.8 Default Apps and File Associations

A file typically becomes corrupted when a problem occurs during the recording session, saving of the file, or copying or moving of the video file. If your control module loses power or crashes as you copy or move a file, there's a good possibility that the file will become corrupted.

Other possible causes of corrupt video files are:

- The USB or SD card was removed from the control module before the copy or move function could be completed.
- The control module loses power as the file is being recorded, copied, or moved.
- The control module is dropped or moved, and the USB drives lose connection with the USB port as the file is being recorded, copied, or moved.
- Using inferior quality USB drives or SD cards.

If a file is copied or moved from the control module and will not play on a PC:

- Check to see if the file will play in the control module. If it does not play, then the file may have been corrupted during the move or copy. Try and recopy the file again, making sure not to interrupt the process until it is finished.

## 4 Video Recording and Picture Image Capture

If a file copied or moved from the control module, will play in the control module but not play on a PC:

- Try a different media player on the PC and try a different PC. The MP4 video format used by the control module is a Microsoft format and should play in the Windows Media Player with no issues. If the file is not playing or playing incorrectly, there is a possibility that the correct video codec is missing. Computers running Windows 8 or higher will most likely have this codec installed by default. It is possible that in older operating systems, a codec may need to be installed. See section 4.7 Getting Codecs.

## 5. Features Available During Recording

During a video recording, the following options are operational and usable:

- Wi-Fi (see section 6, Wi-Fi)
- Sonde (see section 10, Locating Sondes and Pushrod)
- Audio Commenting (see section 5.1, Voice Over)
- Full-Text writer (see section 5.7, Text Writer)
- Camera LED control
- Distance counter reset
- F9 Display adjustments
- Take a JPEG image picture (section 4.3.2, JPEG Image Capture)
- Pause the video for up to 30 minutes (section 4.4, Play Video and View Pictures in the Control Module)
- Use the digital zoom to view close up (view only, the zoom effect will not be recorded)
- Pushrod tracing (section 10, Locating Sondes and Pushrod)

### 5.1 Voice Over

The voice-over feature will add audio comments to the recorded video. The control module has an internal microphone located to the left of the microphone on/off button. An external microphone jack is located below the microphone on/off button. Use an external microphone when in a noisy area.



Microphone on/off button



When the microphone is on, this icon will show on the status bar



Internal microphone



External microphone jack

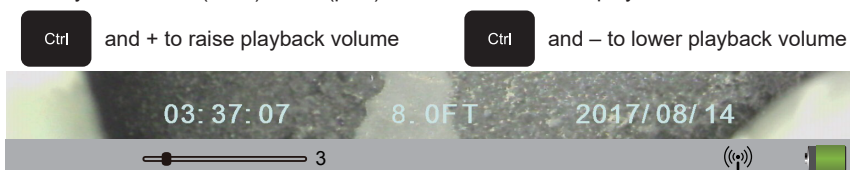
1. Press the **Microphone** button on the front panel of the control module. When the microphone is on, the button will glow red, and the microphone icon will be shown on the screen's status bar.
2. Speak clearly at a normal tone and volume towards the internal microphone labeled with an icon to the left of the microphone on/off button.
3. Stay at a distance between one and two feet from the internal microphone while speaking.
4. Press the **Microphone** button again to turn the microphone off.

### 5.2 Volume Control

During playback of the recorded video, the volume level can be adjusted.

Press and hold the **Ctrl** key, then use – (dash) and + (plus) keys to lower and raise the playback volume. The volume status will appear at the bottom center of the screen while the changes are being made.

Press and hold the Ctrl key, then use – (dash) and + (plus) to lower and raise the playback volume.

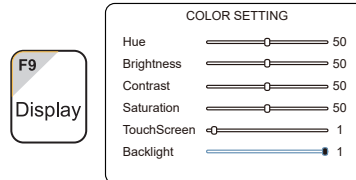




### 5.3 Display and Backlight Settings

At any time pressing the **F9 Display** key will bring up the color settings/backlight sub-menu. From this menu, the color settings for the LCD can be made, touchscreen function turned on or off, and the backlight turned on or off.

1. Use the **up** ↑ and **down** ↓ arrow keys to move between the color settings selections.
2. Use the **left** ← and **right** → arrow keys to lower or raise the display settings.
3. Use the **left** ← and **right** → arrow keys to turn the backlight on or off. (Left is off, and right is on.)
4. Press the **Enter** key to save the new display setting and exit the sub-menu.



### 5.4 On-Screen Status Bar

The status bar shows the battery status and active features such as sonde, microphone, and Wi-Fi. The key combination of **Ctrl + F10** will hide the status bar. Use the same key combination to bring the status bar back.



### 5.5 On-Screen Display (OSD Info)

The current time, date, and distance of pushrod deployed and be shown on the screen and be recorded in videos and pictures. The color of the OSD info can also be changed to suit the environment inside the pipe being inspected. By default, the OSD is positioned at the bottom of the screen and in white text.



1. Press the **F2 Info** key once time to show the OSD at the bottom of the screen.
2. Press the **F2 Info** key again to move the OSD to the top of the screen.
3. Press the **F2 Info** key again to turn it off and remove it from the screen.
4. To change the color of the OSD press and hold the **Ctrl** key while pressing the **F2 Info** key to toggle through the available colors.

### 5.6 Camera LED Light Control

Use the camera LED Dimmer knob on the front panel to raise, lower, or turn off the camera's LED lighting.



## 5.7 Text Writer

### 5.7.1 Introduction to the Text Writer

The Text Writer function allows users to add descriptive text and comments to recorded videos and pictures. The user can customize the text description being shown on the videos and pictures. The Text Writer has 20 pages with 14 lines and 30 characters per line per page to be saved and later recalled for use.

The content from the Text Writer is saved into memory, so if the unit is turned off, the text will still be available when turned on again.



**NOTE**






If the unit is reset to factory defaults, the saved pages of text will be lost. If the CMOS battery on the DVR circuit board is removed, all text will be lost. Only the text is saved into memory. Any colored text will be reset to the default color of white.

The ESC, F3, F4, F5, F6, F7, F8, and F11, Page Up, and Page Down keys are related to using the Text Writer feature and covered in this section of this manual.

### 5.7.2 Keyboard Function Keys of the Text Writer



Fn Keys	Function	Description
ESC	Clear text from the screen	At any time, press the <b>ESC</b> key to clear the Text Writer's text from the screen.
F2 Info  Ctrl + F2	Change OSD position, turn off, and changing colors.	<b>F2 – Info (On Screen Display)</b> – The On Screen Display shows the Date, Time, and Distance set in the control module. This information will appear in videos and pictures. Pressing this key: x 1 will turn on and display at the bottom of the screen, x 2 will move it to the top of the screen, and x 3 will turn it off.  <b>Ctrl + F2 – Change On-Screen Display text colors</b> - While holding down the <b>Ctrl</b> key, press the <b>F2 Info</b> key repeatedly to toggle through the colors of white, black, yellow, and green.
F3 Text	Change Text Colors	<b>F3 – Text Color</b> – Use the <b>F3 Text</b> key to change the text color from the default color of white, black, yellow, and green.  <b>Ctrl + F3 – turn off/on</b> Press and hold the <b>Ctrl</b> key and press <b>F3</b> to turn the text writer on and off. When the Text Writer is on, the current page number is shown on the bottom right of the screen. When turned off, the page number is not shown.
F4 Back-ground	Change Background Colors	<b>F4 – Text Background</b> – Use the <b>F4</b> key to add a background color and toggle through the background colors of black, white, and grey.

	<p><b>Recall a saved page</b></p>	<p><b>F5 – Recall Page</b> – Use the <b>F5 Recall</b> key to retrieve a saved page of text from memory. Press the <b>F5 Recall</b> key, and a page number dialog box will appear in the bottom-left section of the screen. Use the <b>up</b> and <b>down</b> arrow keys to scroll to the desired page to recall. When the number for the desired page to recall is shown, press the enter key to complete the operation.</p>
	<p><b>Saves the current page of text</b></p>	<p><b>F6 – Save Page</b> – Use this key to save the Text Writer’s text into memory. When text is placed on the screen via the Text Writer, the page that contains the text can be saved into memory and be recalled for future use.</p>
	<p><b>Delete saved pages</b></p>	<p><b>F7 – Delete Page</b> – Use this key to delete a saved page of text. Recall the page or use the <b>Page Up</b> and <b>Page Down</b> keys to scroll to this page. While on this page, press the <b>F7 Delete</b> key to complete the operation. <b>NOTE: Deleted pages cannot be retrieved.</b></p>
	<p><b>Delete all saved pages</b></p>	<p><b>F8 - Delete All Pages</b> – Use this key to delete all saved pages of text. Press the <b>F8</b> key, and a message will appear to confirm the deletion of all the pages. Use the <b>left</b> and <b>right</b> arrow keys to select <b>OK</b> to continue the process or cancel the process. <b>NOTE: Deleted pages cannot be retrieved.</b></p>
	<p><b>Change Fonts</b></p>	<p><b>F11 – Font</b> – Use this key to change the font type of the Text Writer text. Press repeatedly to scroll through five font types.</p>



**TIP**

Darker colors may work better in pipes with water running through them. The lights from the camera head may reflect in the water, and white or yellow text may become washed out. Use a darker color and switch from light to dark when needed.



**TIP**

Note that the page being recalled will be recalled into the current page displayed by the page number shown on the bottom right of the screen. Pressing the **ESC** key will clear the recalled text and recalling the page number shown on the screen into itself will bring back that text.



**TIP**

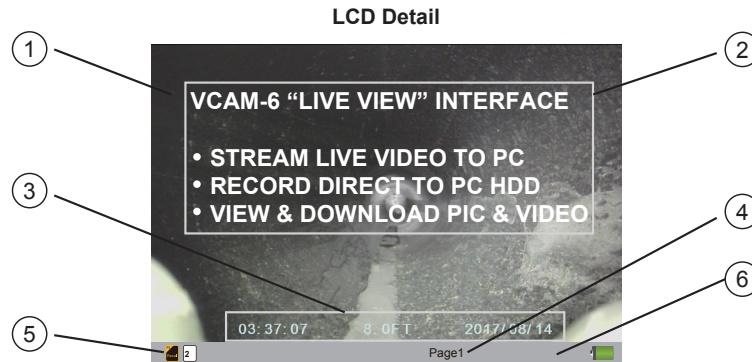
Use the **Pause** key on the top keypad to pause the video recording. With the video paused, use the up and down arrow keys to scroll through the saved pages of text and stop at the desired page. With the desired text being shown un-pause the video to continue recording. At any time during the recording, press the **ESC** key to clear the text from the screen.



**TIP**

Third-party observation software (**PACP** and **LACP**) can be used with the control module through the **USB Data Port** and **Video Out** composite socket.


### 5.7.3 Text Writer Components



1	Main viewing area
2	Text Writer text
3	On-Screen Display of Time, Distance Deployed, and Date.
4	Current Text Writer page
5	The Status Bar shows the battery status and active features such as sonde, microphone, and Wi-Fi. The key combination of <b>Ctrl + F10</b> will hide the status bar. Use the same key combination to bring the status bar back.
6	Page recall dialog box will appear when the <b>F5 Recall</b> key is used to recall saved pages of text. Use the <b>up</b> and <b>down</b> arrow keys to scroll to the page number of the desired page to recall.

### 5.8 JPEG Image Capture

Pictures will be saved to the default drive you selected in the initial control module setup screen. If no other drive is selected, the pictures will be saved on the internal hard drive.

1. Press the **Picture Capture**  key on the top panel keypad.
2. The picture icon and the picture file name will appear momentarily on the bottom left of the status bar confirming that the picture was taken and saved.
3. Pictures can be taken from live video, while a recording is in progress, or from a video being played back in the control module.





**TIP**

Use the Text Writer feature to add identifying text to the recording video and image captures. Now while looking at the preview in the file list sub-menu, the text recorded on the video and pictures will help identify the target video or picture.

### 5.9 Digital Zoom

Use the zoom feature while viewing live video, recorded video, or jpeg captures.

1. Press the **Zoom**  button on top panel keypad to activate the zoom feature and bring up the red zoom control box on the screen.
2. Move the zoom box  with the arrow keys to the area to be magnified and press the **Enter** key.

While the zoom box is shown press up to three times more to increase the digital zoom level. While using the zoom feature, no other keys on the keyboard, top panel, or front panel will be useable.

## 6. Wi-Fi

### 6.1 Wi-Fi Connection for Apps

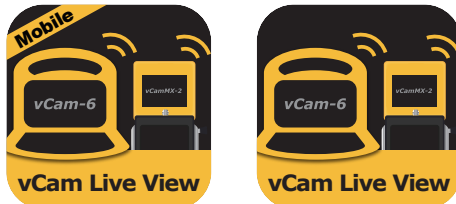
The vCam-6 Control Module has built-in Wi-Fi that broadcasts an SSID (secure network name) and uses DHCP (the protocol that assigns an IP address needed to connect to the control module) to assign IP addresses to a tablet or smartphone.

When connected to the control module, a desktop app or smartphone/tablet app can be used to stream live video from the control module. The video stream will include any text shown on the control module screen along with the on-screen display showing the system time, distance out and date.

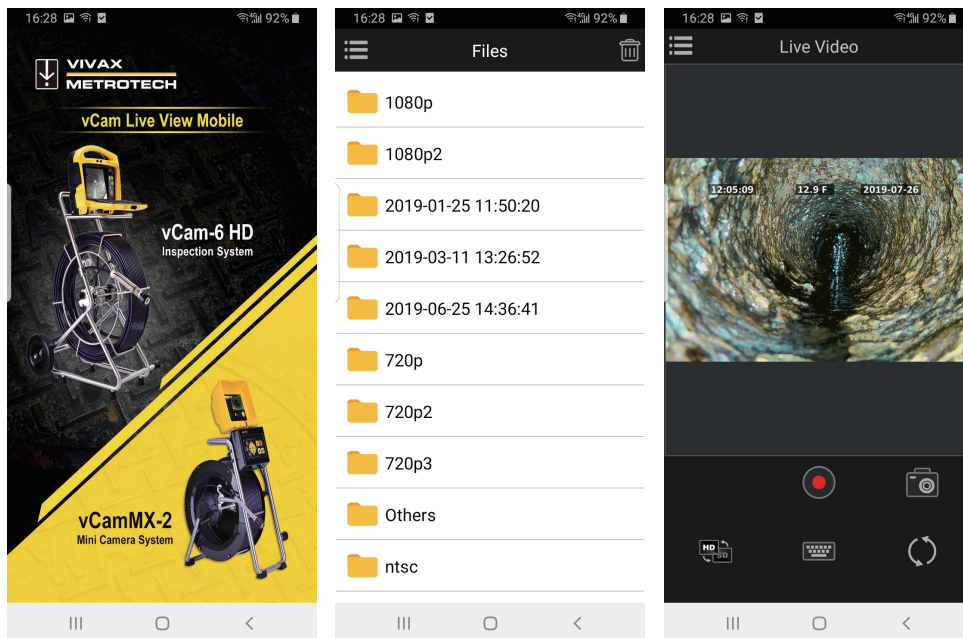
#### Connection Settings for Apps

Typically, a desktop or mobile app will not need any setup instructions.

Visit our website at [www.vivax-metrotech.com](http://www.vivax-metrotech.com) for more information and download links.



vCam Live View mobile and desktop icons



vCam Live View mobile screenshots

## 7. Cable Reels

### 7.1 Cable Reel Overview

#### 7.1.1 Pushrod Cable

The Pushrod Cable used on both reels is constructed of a fiberglass rod surrounded by wire conductors and a Kevlar braid, all of which are coated with a thick polypropylene jacket. Because of the harsh environment, the pushrod is used in; care should be taken to keep it in good operating condition.

**Check Pushrod for Wear** – Visually inspect the pushrod for cuts, kinks, and abrasions as it is retrieved back into the cable cage. If the jacket is cut or worn to the point that the yellow or white Kevlar braid can be seen, then it is time to replace the pushrod. Using the pushrod with open cuts will result in water and moisture entering the pushrod and eventually traveling through it, causing a degraded camera image, or total image failure.

The pushrod sections shown below are examples of badly worn jackets. Pushrod, such as this should be replaced as soon as possible.



**Clean debris from the Cable Guide** – Keeping the rollers on the cable guide will prolong the life of it and prevent the pushrod from rubbing against a surface that is not moving. Check the sides of the Cable Guide and clean any accumulated dirt and debris from its surrounding area. Periodically remove the roller and clean any dirt that may have deposited under it.

**Keep the Pushrod and Termination Spring Assembly dry and clean** – When retrieving the pushrod, keep a clean, dry rag in one hand and wipe down the pushrod as it moves through it. At the end of the day, use low-pressure water to rinse off the camera head and rinse away accumulated dirt and debris that may be caught in the spring. Shake dry or use low-pressure air to blow the excess water away and dry off the parts. The Camera Head, Pushrod, and Termination Parts are exposed to very harsh chemicals in day-to-day use. Keeping a clean system will help prolong the life of these parts.

**Maintain proper control of the Pushrod** – Attempting to pull the pushrod out of the reel while the reel is locked will result in the pushrod collapsing in the reel and stressing the pushrod. Pushing the pushrod back into the reel while it is locked may cause the reel to tip over or kink the cable.

**Rinse off the termination parts before the end of the day** – The camera and pushrod are subjected to a very harsh environment with possibly very caustic chemicals. If the parts are not cleaned off and allowed to dry after use, it may prematurely wear on these parts. Use low-pressure water to rinse out the termination spring parts. Wipe dry or use low-pressure air to blow off the water before storing it for the night or long periods. It is a good practice to remove the skid when storing to prevent water from drying between the skid and camera head.

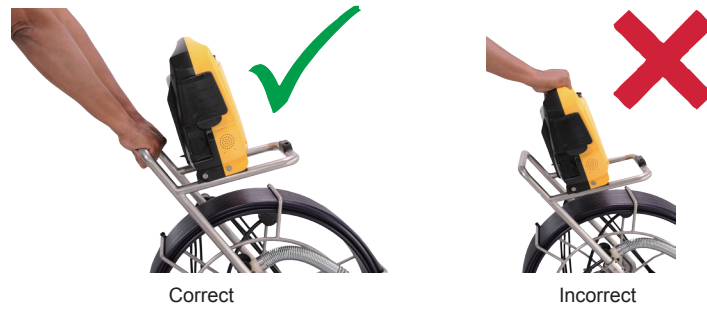
#### 7.1.2 Using the Cable Reels



**WARNING**

Do not use the control module as a handle to move the reel. Remove the control module or use the handle of the reel to move the reel.

## 7 Cable Reels



### 7.1.3 Mounting the Control Module

1. Line up the four pins on the control module bottom to the slots in the reels mounting blocks.



2. Lower the control module into the mounting blocks.



3. Push the control module backward until locked into place.



4. Unspool enough of the interconnect cable from the reel to allow its plug to reach the socket on the control module. Be aware of any excess cable around the cable cage that may become tangled when the cage starts spinning. Use the Velcro strap attached to the interconnect cable to secure the cable in place.



## 7 Cable Reels

5. Plug the interconnect cable into the control module's bottom socket.

This is a key plug and socket, so be sure to line up the red dot on the interconnect cable plug to the same red dot on the interconnect socket on the control module.

- a. Pull back the knurled ring on the plug.



- b. Line up the red dot on the interconnect cable plug with the red dot on the control module's socket. Insert the plug into the socket and release the knurled ring.



- c. Check that the connection is secure by giving a slight wiggle and tug.
- d. To remove the interconnect cable, pull back the knurled ring and pull the plug out.



### WARNING

When securing the interconnect cable slack, do not leave the angle of the cable from the socket at a sharp bend. Leave some slack in the cable to prevent any broken internal wires where the cable meets the connector.



### 7.1.4 Remove the Control Module

Press and hold down the locking tab to release the locking mechanism. With the locking tab held down, use an upward and forward motion at the same time to lift the control module out of the mounting brackets.



## 7 Cable Reels



### 7.1.5 Distance Counter Accuracy

For best results from the distance counter, follow these instructions starting with the control module **turned off**. Also, check section 3.2.8 of this manual regarding “Setting the Reel Type” to make sure the correct reel type and footage of the reel are being used in the control module settings.

1. Turn the cage to approximately the 9-O'clock position using the sonde cup as the guide.



Sonde cup at 9 O'clock position

2. Hold the cage at the 9 O'clock position, grab the spring assembly, and thread the pushrod through the cable guide.
3. Position the base of the sonde cup into the cable guide and lock the cage, as shown below. The sonde cup (**a**) is now in the cable guide at a 12 O'clock position, and the pushrod section from the cage to the sonde cup (**b**) is bent from the cage to the cable guide.



The sonde cup (a) in the cable guide at the 12 O'clock position

4. Attach the interconnect cable to the control module.
  5. Power on the control module.
- When the control module starts, it will see the position of the sonde cup as “zero.”

Also, check section 3.2.8 of this manual regarding “Setting the Reel Type.”

### 7.1.6 Deployment of the Pushrod Cable

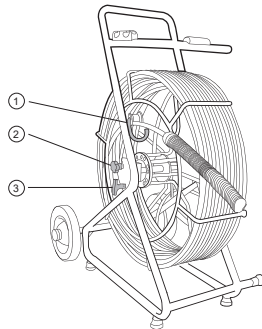


**WARNING**

The friction brake should always be partially applied to slow down cable deployment. Great care should be taken when stopping the cable from unwinding to avoid injury.

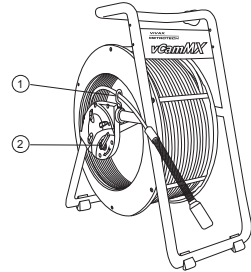
Do not wear loose clothing that can become caught in a spinning reel. Keep hands away from a spinning reel.

1. Position the reel on a flat surface approximately three to six feet or one to two meters from the entry point. This will provide enough space to work with the pushrod without a lot of slack dragging on the ground. Use the friction brake to slow down the movement of the cable cage if needed. Using the reel in a horizontal position makes the width between the feet greater. This will give the reel more stability if on uneven surfaces and will lower the height when in confined spaces.
2. Unlock the cable cage and loosen the friction brake so that the cable cage can spin.



**Type-CP Standard Reel**

1	Cable Guide
2	Locking Brake
3	Friction Brake



**MX Mini Reel**

1	Cable Guide
2	Locking Brake and Friction Brake

3. Turn the cable cage forward (clockwise) until the camera head is approximately at 9 o'clock position.
4. Pull the termination spring out of the cage and enough of the pushrod through the cage opening to thread the pushrod into the cable guide.
5. The reel is now ready to be deployed into the pipe.



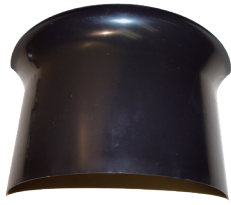
**TIP**

Before deploying the pushrod, you should:

- a) Remove standing water from the pipe before inspecting. Inspection cameras are used to inspect pipes, and the images will be much better if the camera head is not underwater.
- b) Remove debris and objects from the pipe first. The camera is made to inspect the insides of pipes and not to clean them or unblock them.

Use the Insertion Sleeve as much as possible to prevent the pushrod from rubbing on sharp surfaces. Use devices such as a Tiger Tail when the point of entry makes it impossible to use the Insertion Sleeve, such as inspecting lines in a manhole.

## 7 Cable Reels



**Insert Sleeve**



**Insert Sleeve in the cleanout**



**Tiger tail used on a manhole**

Use “grip” type rubber gloves to get a better grip and to protect your hands from sludge during retrieval. The gripping action of the gloves will help keep a good hold on the pushrod while deploying.

Apply the pushing force to the pushrod as close to the point of entry as possible. Having excess pushrod between the point of entry and while pushing could result in kinking the pushrod. Never stand and use your weight to push on the pushrod. This may cause the pushrod to kink.



**Proper placement and pushing force**



**Improper placement and pushing may result in kinking the pushrod.**

Use finesse and not force when needed. The camera and pushrod are made to travel through multiple bends within reason. If having trouble navigating through the pipe, try and pull the camera back four to eight inches and give it a quick push through. Sometimes the quick pushing motion will push the camera and termination through a tight area. Never pull the camera head back and repeatedly ram it into the pipe in an attempt to get through.

Run water in the pipe while inspecting. Inspect downstream with water running to lessen the friction in the pipe and to wash away dirt that may collect on the camera lens.

When having difficulties pushing, it may be better to do the recording on the way back, so that the video recording does not waste time showing navigation through difficult areas. Record during the pullback and use even slow strokes to pull back the pushrod.

When accessing a “Tee” entry, use a string to lift the camera head and point it in the desired direction in the Tee. Be extra careful in Tee entries not to fold the camera back on itself; this could cause the camera to get stuck in the pipe.

Be sure to use the correct model camera in the correct size pipe. Using a camera that is too big may cause it to get stuck; using a camera that is too small will result in poor lighting and video quality.

## 8. Camera Heads and Terminations

### 8.1 Parts of the Camera Heads

#### D34 and D46 Series Cameras for Type-CP Standard Reel

##### Camera Head Face



1	Sapphire glass lens
2	Polycarbonate LED cover

##### Camera Head Body



1	Camera Base Threads
2	Skid Screw Grooves
3	Main Housing

##### Camera Head Rear



1	Alignment Key
2	Connector Contact Pins
3	Base O-Ring

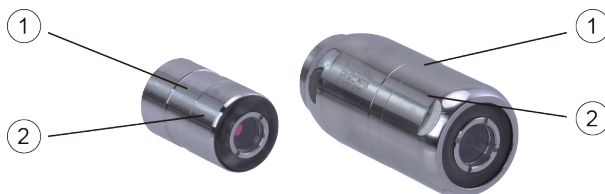
#### D18-MX and D26-MX Cameras for MX Mini Reel

##### Camera Head Face



1	Sapphire glass lens
2	Polycarbonate LED cover

##### Camera Head Body



1	Groove for skid setscrews
2	Camera housing

**Camera Head Rear**



1	Interior threads
2	Gold contact pins
3	Circuit board

**8.1.1 Camera Head Options**



The vCam series camera heads are available in a range of sizes for various applications. Choosing the proper camera depends on the diameter of the pipe to be inspected. The vCam-6 Control Module will sense the video format (PAL or NTSC) and automatically reset itself to work in that format.

The vCam-6 is an HD format control module and will record in full 1080p high definition when used with the HD version D34-HD and D46-HD camera heads. The vCam-6 will also work with older analog D34-M, D34-C, or D46-CP camera heads.

The MX series cameras used on the MX reel are not HD but will work with the vCam-6 control module.



All camera heads ship with a protective “standard skid” installed.

**Camera Head Options for Standard Type-CP Reel**

Camera Heads	Fits Reels	Description	Pipe Size Range
 <b>D34-HD and D34-C, Self-Leveling 34mm / 1.3” diameter</b>	Type-CP Standard Reel	D34-C NTSC (USA) D34-HD NTSC (USA) D34-C PAL (Europe) D34-HD PAL (Europe)	3 to 6 inches 75 to 152mm
 <b>D46-HD and D46-CP Self-Leveling 46mm / 1.8” diameter</b>	Type-CP	D34-CP NTSC (USA) D46-HD NTSC (USA) D46-CP PAL (Europe) D46-HD PAL (Europe)	3 to 8 inches 75 to 203mm

Contact a local Vivax-Metrotech distributor or local office for ordering information, applications, compatibility, and pricing.

**Camera Head Options for Mini MX Reel**

Camera Heads	Fits Reels	Description	Pipe Size Range
 <p><b>D18-MX</b> Non-Leveling 18mm / 0.76" diameter</p>	MX Mini Reel	D18-MX NTSC (USA) D18-MX PAL (Europe)	2 to 4 inches 50 to 100mm
 <p><b>D26-MX,</b> Self-Leveling 26mm / 1" diameter</p>	MX Mini Reel	D26-MX NTSC (USA) D26-MX PAL (NTSC)	2 to 4 inches 50 to 100mm
<p>Contact a local Vivax-Metrotech distributor or local office for ordering information, applications, compatibility, and pricing.</p>			

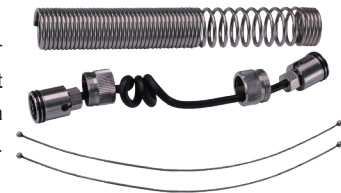
**8.2 Spring Assembly Parts**

The Spring Assembly is comprised of the parts that connect the camera head on one end and are connected to the pushrod on the other.

The spring assembly for the Type-CP Reel will consist of a spring, coiled cable assembly, and pair of lanyards as separate parts. The termination spring assembly for the MX reel is an all-in-one assembly consisting of a spring, coiled cable, and lanyard preassembled.

**8.2.1 Type-CP Termination Spring Kits**

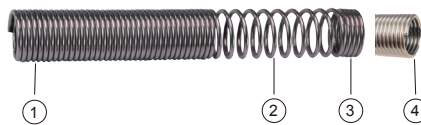
The Type-CP reel spring is available in two lengths and configurations, allowing for customization and use in a variety of applications and conditions. For example, a short length spring would be ideal in a larger diameter pipe due to having less side-to-side camera movement, whereas a longer spring would better suit a pipe with multiple bends and elbows.



**8.2.2 Spring**

A hardened steel spring provides a flexible transition between the pushrod and the camera head. The flexible spring also protects the coiled cable and lanyard set inside of it. The spring has a long length of tight coils in the rear (end closest to the pushrod), open coils towards the front, and a short length of closed coils at the camera end. The Type-CP springs at each end of the spring end at the "lead spring coil," which is used with the camera removal tool to remove the camera from the spring and the spring from the base.

**Type-CP Standard Termination Spring**



1	Pushrod End	3	Camera End
2	Open Coils	4	Lead Spring Coil

## 8 Camera Heads and Terminations

### MX Mini Termination Spring Assembly

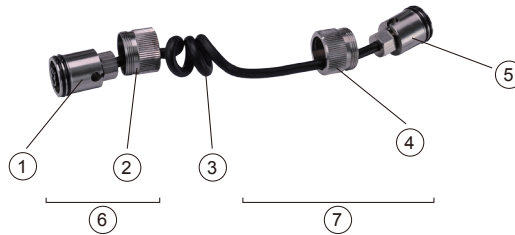


1	Camera End with Circular Circuit Board	3	Pushrod End with Push Pins
2	Spring Assembly with Coiled Cable and Lanyard		

### 8.2.3 Coiled Cable Assembly

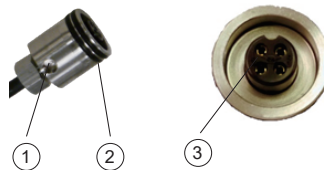
The coiled cable assembly is the electrical connection between the pushrod and the camera head. The cable is coiled so that it can stretch without breaking as the spring moves through turns. Power for the camera lights and video signal run through this cable from the pushrod sonde compartment.

#### Termination Coiled Cable Assembly for Type-CP Reel



1	Connector Base	5	Connector Base
2	Floating Camera Nut	6	Rear (short pushrod end)
3	Main Cable	7	Front (long camera end)
4	Floating Camera Nut		

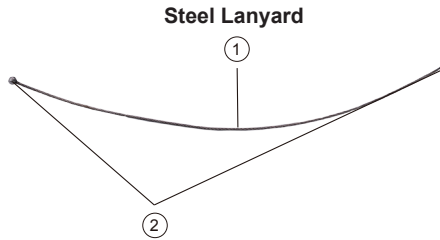
#### Connector Base Detail



1	Lanyard Slots	3	Keyed 4-Pin Camera Socket
2	O-Rings		

### 8.2.4 Lanyard Set

The stainless-steel set of lanyards within the spring attach the base of the termination by the pushrod to the camera head. These lanyards prevent the spring from over-extending when retrieving the camera.



1	Wire Rope	2	Retaining Ball
---	-----------	---	----------------

### 8.2.5 Termination Parts List

Picture	Description	Comments
	Camera Removal Tool for D34 and D46 cameras	Comes with the control module
	Coiled Cord O-Ring, 17mm x 1.5mm	Two required at each end of the coiled cord assembly
	Camera Body O-Ring, 15mm x 1.5mm	Located in the base of the camera below the 4-pin connector
	Coiled cable assembly, 12mm Standard	Fits D34 and D46 series cameras
	Coiled cable assembly, 12mm Short	Fits D34 and D46 series cameras
	Spring Kit, 12mm Standard (33mm dia. x 11-3/4" / 30cm long spring)	Kit includes a Spring, Coiled Cord Assembly and pair of Steel Lanyards
	Spring Kit, 12mm Short (33mm dia. x 7" / 18cm long spring)	Kit includes a Spring, Coiled Cord Assembly and pair of Steel Lanyards
	MX Spring Assembly	All-in-one assembly consisting of spring, coiled cable and lanyard preassembled

Contact a local Vivax-Metrotech distributor or local office for ordering information, applications, compatibility, and pricing.



**NOTE**

It is a good practice to keep a spare set of lanyards, a coiled cable and spring as a spare part at all times. These parts are field serviceable and can be changed in a matter of minutes while at a job site.



### 8.3 Removing the Camera Head – D34 and D46 Series Cameras

Tools needed: Camera Removal Tool (supplied with control module), an optional clamping or holding device, like a vise, would be helpful. Use only the tool provided to remove the camera head.

1. Clamp the pushrod into a vice at the base of the termination.



2. Position the "hook" part of the camera removal tool on top of the springs starting coil.



3. Hold the camera in one hand while using the camera removal tool to turn the spring starting coil clockwise. Continue this until the camera is loose enough to be removed by hand.



4. After the camera head is completely off of the spring, unscrew the floating camera nut from the base of the camera by turning it counter-clockwise.



5. Firmly grasp the connector base and carefully pull it out of the camera base.



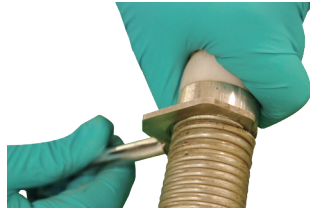
6. Clean off any grease and debris from the o-rings at the base of the camera and connection plug if needed. Store the camera head in a clean, dry place to prevent corrosion to any camera parts and prevent the pins from being damaged. If storing for long periods of time, remove the skid from the camera head.



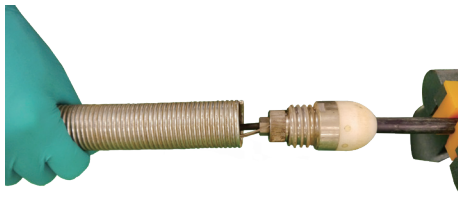
### 8.4 Removing the Standard Reel's Termination Spring and Coiled Cable

Tools needed: Camera Removal Tool (supplied with control module) and optional clamping or holding device, like a vise, would be helpful. Use only the tool provided to remove the camera head.

1. Follow the instructions in section 8.3, Removing the Camera Head to remove the camera.
2. Position the "hook" part of the camera removal tool on top of the spring's starting coil.



3. Using the tool turn the spring counterclockwise until the spring is loose enough to be removed by hand. Completely remove the spring.



4. Un-screw the floating camera nut from the termination base.



5. Firmly grasp the connector base and pull it out of the termination base.



6. Clean off any grease and debris from the o-rings at the base of the camera and connection plug if needed. Store the camera head in a clean, dry place to prevent corrosion to any camera parts and prevent the pins from being damaged. If storing for prolonged periods of time, remove any skids from the camera head.



## 8.5 Installing the Standard Reel's Coiled Cable and Termination Spring

### 8.5.1 Pre-check the Termination Parts

Do a pre-check of the termination parts before installing them. Replace any parts if you have any doubts about them. Put all the parts together outside of the spring and use a control module attached to the reel to look for video and LED lighting control. It is important that all the connectors, O-rings and threads be clean and free of debris between the threads.

### 8.5.2 Pre-checking Steel Lanyards

These lanyards prevent the spring from over-extending when retrieving the camera.

Check the lanyards for:

- **Steel Balls** – Check that the balls on the ends are secure, not deformed, and show no signs of rust.
- **Wire rope** – Check for splinters, abrasions, kinks, and signs of rust.



### 8.5.3 Pre-checking the Coiled Cable Assembly

The coiled cable assembly is the electrical connection between the pushrod and the camera head. This is better checked while attached to the termination base and camera head.

Check the Coiled Cable for:

- **Jacketing** – Check that the jacket of the cable does not have any cuts or abrasions. When connected to a control module, wiggle the cable at the base of the connections to check for hidden breaks in the cable.
- **Connectors** – Check that the plastic 4-pin connectors at each end are clean and in good condition.
- **O-rings** – Check the O-rings for wear, cuts, and other damage.
- **Continuity** – Attach the coiled cable to the termination base and to a camera head. Attach the reel to a control module and power on. Check for video signal, LED lighting, and lighting control.
- **Floating camera nuts** – Check that the threads on the floating camera nut are not damaged, are clean of dirt, and the round shape is not deformed.



### 8.5.4 Pre-checking the Spring

The termination spring provides a flexible transition between the pushrod and the camera head.

Check the termination spring for:

- **Deformity** – Check that the spring is not deformed
- **Lead coil** – Check that the lead coil is not bent, broken, or protruding
- **Rust** – Check that rust has not compromised the spring material

## 8.6 *Installing the D34 and D46 series Camera Heads onto the Type-CP Standard Reel*

### 8.6.1 *Install the Coiled Cable and Termination Spring*



**NOTE**

The lengths of the cable after the coiled part are different. One is longer than the other. The longer end gets attached to the camera while the shorter end gets attached to the termination base.

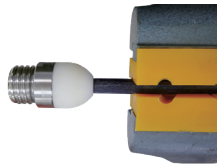


**ATTENTION**

The 4-pin male plug and female socket used to mount the camera head “keyed” connectors. The keyed notch on the camera base must line up with the keyed groove in the coiled cable socket. Failure to align these keys together correctly will result in damage to the camera pins and coiled cable connector or the termination base connector.

When assembling the camera or coiled cable, the control module should be powered off or interconnect lead un-plugged. Failure to do so may result in shorting out the camera head.

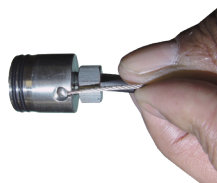
1. Clamp the pushrod into a vice at the base of the termination.



2. Clean the threads in the termination base then apply a liberal bead of silicone grease to the female base threads.



3. Feed the two lanyards through the floating camera nut and insert it into the lanyard slots. Make sure that the lanyards are straight and not tangled in the coiled cable.



4. Pull the floating camera nut up and over the lanyards.





**ATTENTION**

The 4-pin male plug and female socket used to mount the camera head are “keyed” connectors. The keyed notch on the camera base must line up with the keyed groove in the coiled cable socket. Failure to align these keyways together correctly will result in damage to the camera pins and coiled cable connector or the termination base connector.

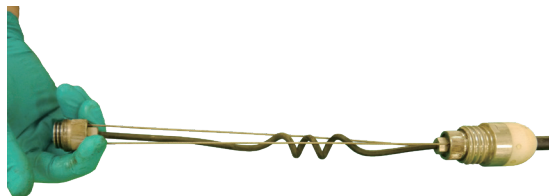
5. Line up the 4-pin female connector notch with the 4-pin male connector in the termination base.



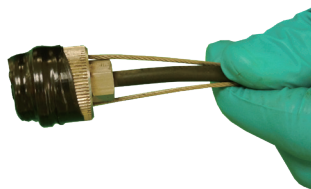
6. Insert the coiled cable connector into the termination base. Hand tighten only. Do not use any tools to tighten this connection.



7. Feed the opposite end of the lanyards through the floating camera nut and insert it into the opposite connector bases lanyard slots. Make sure that the lanyards are straight and not tangled in the coiled cable.
8. Pull the knurled camera nut up and over the lanyards.



9. Wrap a piece of electrical tape around the floating camera nut securing the nut with lanyards to the connector.



10. Slide the spring over the coiled cable assembly.



## 8 Camera Heads and Terminations

11. Screw the spring into the termination base. Tighten by hand to termination, do not use any tools.



12. Pull enough of the coiled cable to work with to attach a camera head.



### 8.6.2 Pre-checking the Camera Head Before Installing

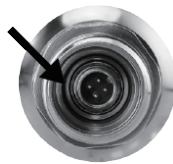
If the occasion should arise where a camera head must be re-installed or replaced, pre-check these items before the camera is fully installed. The visual checks can be done in an area with good lighting with the use of a magnifier. Some checks are better done with the camera LEDs turned on. For these checks, you can use the camera test port, a camera test lead, or use the coiled cable plugged into the termination base of a reel connected to a powered-on control module.

### 8.6.3 Pre-checking for Picture and LED Control

Visually check the 4-pin female connector on the camera and the 4-pin male connector on the coiled cable. Line up the keyed connector on the coiled cable to the camera head and attach them. Attach a reel to a control module and power it on. Through the control module, check for an acceptable picture, that the LED lights on, the camera work, and that you can control the LED lights. While still connected to the control module with a picture showing wiggle the cable at the base of the connections to check for hidden breaks in the cable.

### 8.6.4 Pre-checking the Camera Base O-Ring

Visually check the O-ring for wear, cuts, and deformation. Replace the O-ring if you have any doubts. Apply a bead of silicon-based grease to the O-ring and the camera head's female base threads before installing the camera head.

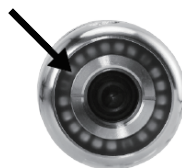


### 8.6.5 Pre-checking the Camera Glass Lens and LED Cover

This pre-check is better done with a control module attached to a reel or by the camera test port. For this pre-check, the LED lights should be on so that the camera face can be better examined.

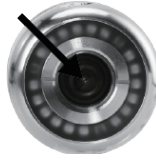
#### Pre-checking the LED Cover

The Polycarbonate LED cover is the section of the face of the camera that covers the LEDs. Visually check the inside and outside radius for chips and cracks.



### Sapphire Glass Lens

The Sapphire Glass camera lens is the center clear glass section of the camera face. Visually check the outside radius for chips and cracks. Visually check the surface of the glass for scratches.



If you suspect that any cracks or chips may let moisture in, or if you suspect that scratches on the lens may affect the video quality, contact the factory or your local dealer.

### 8.6.6 Installing the D34 and D46 Series Camera Heads

After pre-checking the termination parts and camera head, the camera head is now ready to be installed.

The only materials needed are a 1 cc tube of a silicon-based grease and a swab applicator. No tools should be used to install the camera head or termination parts. These require only hand tightening.

Use a dry rag if needed to better grip on the floating camera nut if there is a residue of grease around the area.



#### ATTENTION

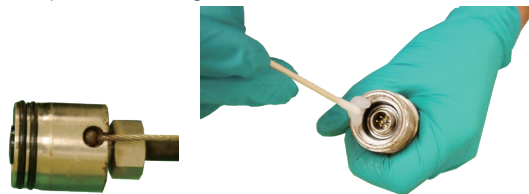
The 4-pin male plug and female socket used to mount the camera head “keyed” connectors. The keyed notch on the camera base must line up with the keyed groove in the coiled cable socket. Failure to align these keyways together correctly will result in damage to the camera pins and coiled cable connector or termination base connector.



#### ATTENTION

When assembling the camera or coiled cable, the control module should be powered off or interconnect lead un-plugged. Failure to do so may result in shorting out the camera head.

1. Use a swab applicator to apply a bead of silicone grease on to the female threads in the camera base. Use a fingertip and apply a bead of silicone grease on top of the 2 O-rings on the coiled cable connector.



2. Feed the coiled cable with lanyards through the spring. Feed an amount that is comfortable to work with.



#### TIP

Use a nylon cable tie to compress some of the coils in the spring. This will give you a few inches of space to work in a while attaching the camera.

## 8 Camera Heads and Terminations

- Line up the keyway on the 4-pin male and female socket and plug and press the coiled cable connector into the camera head.



- Pull up the floating camera nut to cover the lanyard mounting holes and screw the nut into the camera head. **Do not use any tools, hand tighten only.**



- To prevent the lanyards from becoming twisted during the installation of the camera head, first, turn the camera attached to the cable assembly counter-clockwise seven complete turns. Now when screwing the camera head into the spring, the lanyards should not be twisted and wrapped around the coiled cable.



Screw the camera head clock-wise into the termination spring until it is flush with the spring. Hand tighten only.



### **8.7 Removing and Installing the D18-MX and D26-MX Camera Heads onto the MX Mini Reel**

Try not to touch the green circuit board or gold pins on the spring assembly or camera head with bare hands. Touching these will transfer oils from the fingers to these components, which may lead to premature corrosion. Wear clean rubber gloves if possible.

<p><b>Removal:</b> Grasp the spring assembly close to the base of the camera head.</p>	
<p>Use the other hand to turn the camera head counter-clockwise. Turn until the camera is removed.</p>	
<p><b>Installing:</b> Remove any excess dirt that might come into contact with the gold pins or green circuit board. Check that the O-ring is in good condition.</p>	







## 8 Camera Heads and Terminations

<p>Hold the termination spring close to the base of the camera head. Present the camera head to the spring. Screw on the camera head by turning it in the clockwise direction.</p>	
<p>Screw on until the O-Ring is no longer visible. Hand tighten the camera head. Do not use any tools to tighten the camera head.</p>	

### 8.8 Removing and Installing the MX Spring Assembly

Try not to touch the green circuit board or gold pins on the spring assembly or camera head with bare hands. Touching these will transfer oils from the fingers to these components and may lead to premature corrosion. Wear clean rubber gloves if possible.

<p>Remove the camera head following the instructions shown in section 8.7.</p>	
<p>Hold the base of the termination at the sonde end while unscrewing the spring by rotating in a counter-clockwise direction.</p>	
<p>Continue to unscrew the spring by turning it in the counter-clockwise direction.</p>	
<p><b>Installing:</b> Remove any excess dirt that might get onto the gold pins or green circuit board. Check that the O-ring is in good condition.</p>	
<p>Hold the base of the termination at the sonde end while screwing on the spring in the clockwise direction.</p>	
<p>Continue to screw on the spring until the O-Ring is no longer visible. Hand, only. Do not use any tools to install the camera head or spring assembly.</p>	

## 9. Camera Skids

### 9.1 Camera Skids

Camera skids are devices that attach to the camera head to 1) keep the camera head off the floor of the pipe, to help avoid pushing up debris and dirt on which will end up on the camera's lens blocking your view, 2) allow the camera LED lighting to function better by keeping the lights more centered in the pipe allowing a more even spread of light on the pipe walls and ahead and 3) provide protection to the camera head by giving a shoveling effect which allows the camera head to be lifted over offsets and objects which helps prevent the camera head from making direct contact with them. And lastly, the skids will help increase the pushing distance of the camera and pushrod by providing a more non-binding material to slide against plastic, clay, metal, and cement pipes. There are a variety of skids for specific uses and camera sizes and a few different methods of attaching the skids to the camera system.

#### 9.1.1 Standard Skid Installation

The standard skids ship installed on the camera head.

Tools Needed: Small flat screwdriver

1. Use the screwdriver back out the three screws so that the camera head will slide un-obstructed into the skid.



2. Slide the camera head into the skid until the head is flush with the front of the skid.



3. Use screwdriver to secure the standard skid to the camera head.





**NOTE**

Do not overtighten the screws. This may result in stripping the screw threads or damage to the camera housing.



**TIP**

Apply a layer of electrical tape over the screw holes on the installed skid. This will help keep debris and soil out of the screw slots making it easier to remove.



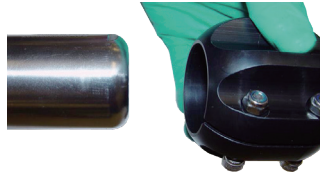
### 9.1.2 Guide Skid Installation

Tools Needed: Hex key

1. Use a hex key and loosen the screws so that the skid will slide un-obstructed onto the camera head.



2. Slide the camera head into the skid until the head is flush with the front of the skid.



3. Use a hex key to secure the skid to the camera head.



**NOTE**

Do not overtighten the setscrews. This may result in damage to the camera housing.

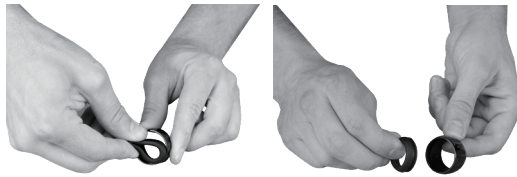
### 9.1.3 Removable Rubber Guard Skids

Some of the vCam series skids will come with a removable rubber front guard. The removable rubber front is meant to protect the camera; it should make direct contact with objects such as offsets. Over time the rubber guard will wear and then it can be replaced with a new rubber front guard. Follow these directions to change the rubber front guard.

1. Remove the skid from the camera.



2. With two fingers, squeeze the rubber front guard as shown and pull it free of the skid.



3. Follow the same procedure to install a fresh one.

## 10. Locating Sondes and Pushrod

### 10.1 Introduction

The Type-Cp and Type-MX reels include a locatable sonde at the base of the spring termination assembly. The controls for the sonde are located on the front panel of the control module.

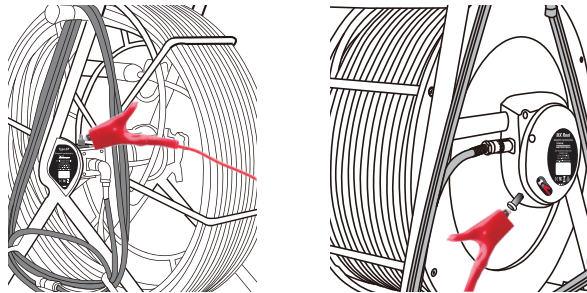
The newer version Type-CP reel (purchased after April of 2014) and all MX reels include the option to trace the entire length of pushrod. A utility locator's transmitter is used externally to send a locate signal through the length of the pushrod.

Vivax-Metrotech manufactures a range of utility locators and sonde locators. Information and instructions on these locators can be found on our website or by contacting your local distributor for more information.

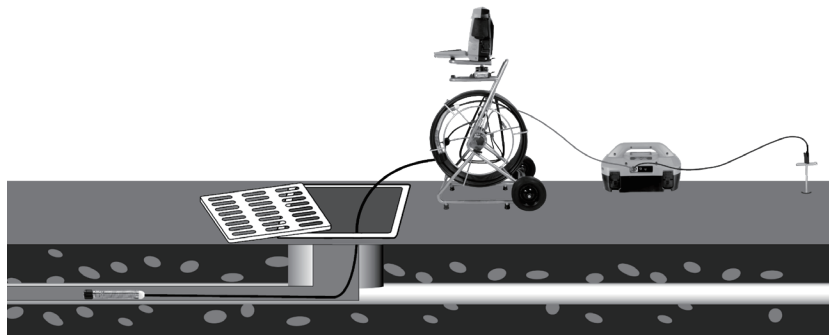
### 10.2 Applying a Locate Signal onto the Pushrod

A utility locator transmitter is required to locate the pushrod. Frequencies starting at 33kHz and above will work better than lower frequencies.

1. Lock the cable cage by using the brake lock.
2. Connect the red colored hot lead from the transmitter to the contact post on the Type-CP or MX reel. Refer to the diagrams in section 2.4.2 and 2.4.3 for the contact post location for the reels.



3. Place the utility locator transmitter:
  - a) Place the transmitter out of the reel's general work area.
  - b) Place the transmitter to prevent the leads from becoming tangled in the spinning reel cage.
  - c) Place the transmitter so that the leads are not crossing over the path of the pushrod in the pipe.
4. Insert the transmitter's ground stake in earth approximately five feet at a right angle to the reel.



5. Turn on the utility locator transmitter and select a frequency. We recommend using a higher frequency such as 33 kHz, 65 kHz, or 83 kHz. Ensure that the transmitter has a good ground. The better the ground, the better the locator will perform.
6. Use the utility locator in the line mode, not sonde mode, to trace the path of the pushrod underground.



**IMPORTANT**

**Always “Call Before You Dig” and follow your own company’s safety practices.  
Always follow local, state, and national regulations.**

**Sonde Locating**

The best practice for locating the camera sonde is to push the camera into the pipe, and when it is level stop and do the locate. From this point on work in 10 to 20-foot increments stopping every 10 to 20 feet and locate the sonde. It is not a good practice to just push the camera into the pipe a great distance away and set out to locate it. The distance counter in the control module may give an estimate as to how far the camera has been deployed, but this is just for reference.

**10.3 Sonde and Camera Locating**

At the time of publishing this manual, the vLoc3-Cam and VM-540 sonde locators are available.

Information and instructions for these locators are available on our website at [www.vivax-metrotech.com](http://www.vivax-metrotech.com).



**IMPORTANT**

**Always “Call Before You Dig” and follow your own company’s safety practices.  
Always follow local, state, and national regulations.**

# 11. Troubleshooting

<b>PROBLEM:</b> No power, unit will not turn on:
<b>CHECK:</b> <ol style="list-style-type: none"><li>1. Check to see that the fuse is installed, blown, or damaged in any way. If the fuse is not installed, then the unit will not charge your battery.</li><li>2. Try using mains current and not battery to turn on the unit. If the unit does power on with mains current, then your battery is not charged, and that may be the reason it will not power on.</li><li>3. While the unit is charging, see if the battery icon on the front panel is glowing red, or if turned on that you see a lightning bolt inside the battery icon on the bottom right corner of the LCD.</li></ol> <p><b>Note:</b> On serial numbers below 1090 1100 00001, the charging indicator will glow red while charging and go blank when fully charged. On serial numbers above 1090 1100 00001, the charging indicator will glow red while charging and turn green when fully charged.</p>

<b>PROBLEM:</b> No picture and no grey status bar:
<b>CHECK:</b> <ol style="list-style-type: none"><li>1. Check that both ends of the interconnect cable are plugged in.</li><li>2. If the camera has lighting, then remove it and plug it into the camera test port.</li><li>3. Check both ends of the coiled cable in the spring. With the camera connected and powered on, move the cable at the ends to see if the loss of video is intermittent.</li></ol>

<b>PROBLEM:</b> Black screen, no picture with grey status bar:
<b>CHECK:</b> <ol style="list-style-type: none"><li>1. Perform a visual check looking for possible point's water entry. Check the camera head looking for cracks in the glass lens or plastic LED cover.</li><li>2. Plug camera head into the camera test port looking for video and lighting.</li><li>3. Inspect the coiled cable for cuts or chafing. Flex both ends of the coiled cable looking for an intermittent connection under the cable jacket.</li><li>4. Inspect the interconnect cable looking for cuts or chafing. Flex both ends of the cable looking for an intermittent connection under the cable jacket.</li></ol>

<b>PROBLEM:</b> Not recording:
<b>CHECK:</b> <ol style="list-style-type: none"><li>1. Check the battery level. When the battery is low, the unit may not have enough power to record.</li><li>2. Check available disk space on the HDD, USB, or SD card.</li><li>3. Check your default storage setting.</li></ol>

<b>PROBLEM:</b> Sonde not working:
<b>CHECK:</b> <ol style="list-style-type: none"><li>1. Check the battery level. When the battery is low, the sonde may not operate.</li><li>2. Check that the sonde frequency in the control module matches that of the sonde locator.</li></ol>

<b>PROBLEM:</b> Distance counters not accurate:
<b>CHECK:</b> In the menu settings for reels check: <ol style="list-style-type: none"> <li>1. Check if the distance counter setting is set to Meters or Feet.</li> <li>2. Check the type of reel used setting is correct.</li> <li>3. Check that the friction brake is not slowing down the cage so much that it jerks in and out.</li> </ol>

<b>PROBLEM:</b> Distance counter not counting:
<b>CHECK:</b> Check the condition of the Interconnect Cable between the control module and reel. With the unit powered on and interconnect cable attached between the control module and reel, twist the interconnect cable wire close to the connectors while watching the distance counter on the display. Try and switch the interconnect cable with another working unit.

<b>PROBLEM:</b> Interference or noise on LCD:
<b>CHECK:</b> The Sonde, in some circumstances, can cause interference on the video being viewed or recorded. It is recommended that the Sonde is turned off unless it is actually being used for location. This also saves power.

<b>PROBLEM:</b> Control Module keeps rebooting because of "Control Module settings have changed" message:
<b>CHECK:</b> Check for loose connections to or damage to the termination coiled cable, interconnect cable, or damage to the reel.

<b>PROBLEM:</b> SD or USB device not recognized:
<b>CHECK:</b> <ol style="list-style-type: none"> <li>1. Make sure the media device is working and not corrupt.</li> <li>2. Try formatting the device in the control module.</li> <li>3. Read the section in this manual "File Format of SD Cards and USB Drives."</li> </ol>

<b>PROBLEM:</b> No audio being heard on recorded video:
<b>CHECK:</b> <ol style="list-style-type: none"> <li>1. Check that volume is turned up during playback. Use key function Ctrl - to lower volume and Ctrl + to raise the volume.</li> <li>2. Assure that the red microphone icon was showing on the status bar and that the microphone button was illuminated during the audio recording.</li> <li>3. Assure that the audio comments were directed towards the internal microphone between one and three feet from the internal microphone.</li> <li>4. Try using an external microphone</li> </ol>

<b>PROBLEM:</b> Dark or hard to view display:
<b>CHECK:</b> <ol style="list-style-type: none"> <li>1. Press the "F9 Display" key and check the display settings.</li> <li>2. Turn the camera LED lights up.</li> </ol>

<b>PROBLEM:</b> Error messages for USB and SD cards, not enough free space or not found.
<b>CHECK:</b> <ol style="list-style-type: none"> <li>1. Check that the USB device is a minimum of 8GB in size and not bigger than 128GB in size.</li> <li>2. Check that the USB device was formatted in FAT32 or NTSC file format.</li> </ol>



**PROBLEM:** Blurry picture

**CHECK:**

Remove the camera head and plug it into the camera test port.

If the picture remains blurry it is possible that water has intruded into the camera head.

Return the camera head for inspection.

If the picture is clear when the camera is in the test port, it is possible that there is a kink in the pushrod or water damage to the interconnect cables 90-degree plug.

**Notes:**

---

---

---

---

---

---

---

---

---

---

---

---

---

---

---

---

---

---

---

---

---

---

---

---

---

---

---

---

---

---

**Disclaimer:** Product and accessory specification and availability information are subject to change without prior notice.



**Vivax-Metrotech Corporation**

3251 Olcott Street, Santa Clara, CA 95054, USA

Toll Free: 1-800-446-3392

Phone: +1 (408) 734-1400

Website: [www.vivax-metrotech.com](http://www.vivax-metrotech.com)



